

Solenoid valves VZWD, directly actuated



FESTO



Solenoid valves VZWD, directly actuated

Key features and overview

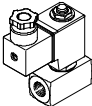

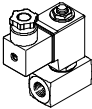
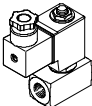
FESTO

General			
<p>Directly actuated solenoid valves VZWD are mainly intended for applications with high pressure ranges and low flow rates. This type of valve switches the sealing</p>		<p>element directly via the solenoid system. The seal generally has to lift away from the seat against the effective operating pressure using just the drive. A closing spring</p>	
		<p>keeps the valve closed assisted by the pressure of the medium. The function is dependent on the seat size, the effective operating</p>	
		<p>pressure and the magnetic force. The differentiation from force pilot operated solenoid valves (VZWF) lies in the flow rate.</p>	
General	Areas of application	Design	Advantages
<p>-  - Connecting thread G$\frac{1}{4}$, G$\frac{1}{8}$</p> <p>-  - Flow rate Kv 0.06 ... 0.4 m³/h</p>	<ul style="list-style-type: none"> • Use in vacuum technology • Venting gas and tank systems • Safety shut-offs for burner controllers 	<ul style="list-style-type: none"> • Design insensitive to slight contamination of the media 	<ul style="list-style-type: none"> • Valves respond from 0 bar up to the max. operating pressure • Excellent tightness

Solenoid valves VZWD, directly actuated

Key features and overview

FESTO

Version	Type	Process valve connection	Nominal size (DN)	Operating pressure [bar]	→ Page/Internet				
Brass housing									
	VZWD-L-...	G1/4	1	0 ... 50	5				
			1.5	0 ... 30					
			2	0 ... 15					
			2.5	0 ... 8					
		G1/8	1	0 ... 50	5				
			1.5	0 ... 30					
			2	0 ... 15					
Brass housing									
	VZWD-L-...	G1/4	1	0 ... 90	8				
			1.5	0 ... 85					
			2	0 ... 40					
			2.5	0 ... 22					
			3	0 ... 15					
			4	0 ... 8					
			5	0 ... 5					
			6	0 ... 4					
		G1/8	1	0 ... 90	8				
			1.5	0 ... 85					
			2	0 ... 40					
			2.5	0 ... 22					
			3	0 ... 15					
			4	0 ... 8					
			5	0 ... 5					
			6	0 ... 4					
			Stainless steel housing						
				VZWD-L-...-R1		G1/4	1	0 ... 90	13
1.5	0 ... 85								
2	0 ... 40								
2.5	0 ... 22								
3	0 ... 15								
4	0 ... 8								
5	0 ... 5								
6	0 ... 4								
	VZWD-L-...-R1	G1/8	1	0 ... 90	13				
			1.5	0 ... 85					
			2	0 ... 40					
			2.5	0 ... 22					
			3	0 ... 15					
			4	0 ... 8					
			5	0 ... 5					
			6	0 ... 4					

Solenoid valves VZWD, directly actuated

FESTO

Type codes

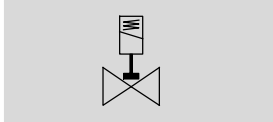
		VZWD	-	L	-	M22C	-	M	-	G18	-	15	-	V	-	2AP4	-	40	-	R1
Type																				
VZWD	Solenoid valve, directly actuated																			
Type of directional control valve																				
L	In-line valve																			
Valve function																				
M22C	2/2-way valve, normally closed, mechanical reset																			
Reset method																				
M	Mechanical spring																			
Process valve connection																				
G18	Thread G1/8																			
G14	Thread G1/4																			
Nominal size																				
10	1.0 mm																			
15	1.5 mm																			
20	2.0 mm																			
25	2.5 mm																			
30	3.0 mm																			
40	4.0 mm																			
50	5.0 mm																			
60	6.0 mm																			
Sealing material																				
V	FPM																			
Nominal operating voltage																				
1	24 V DC																			
2A	110 V AC/50-60 Hz																			
3A	230 V AC/50-60 Hz																			
Electrical connection																				
P4	Plug socket, 3-pin																			
Operating pressure																				
4	Max. 4 bar																			
5	Max. 5 bar																			
8	Max. 8 bar																			
15	Max. 15 bar																			
22	Max. 22 bar																			
30	Max. 30 bar																			
40	Max. 40 bar																			
50	Max. 50 bar																			
85	Max. 85 bar																			
90	Max. 90 bar																			
Corrosion protection																				
	Brass																			
R1	Stainless steel																			


Solenoid valves VZWD, directly actuated


Technical data – Brass housing

FESTO

Function



-  - Flow rate Kv
0.06 ... 0.16 m³/h

-  - Connecting thread
G¼, G½



General technical data				
Nominal size (DN)	1.0	1.5	2.0	2.5
Valve function	2/2-way, single solenoid, closed			
Design	Directly actuated poppet valve			
Type of mounting	In-line installation			
Actuation type	Electric			
Reset method	Mechanical spring			
Direction of flow	Non-reversible			
Type of control	Direct			
Manual override	None			
Mounting position	Any			
Sealing principle	Soft			
Max. viscosity [mm²/s]	22			
Protection class	IP65			

Operating and environmental conditions				
Nominal size (DN)	1.0	1.5	2.0	2.5
Standard nominal flow rate [l/min]	60	95	140	170
Flow rate [m³/h]	0.06	0.09	0.13	0.16
Process valve nominal pressure (PN)	50			
Process valve operating medium	Compressed air in accordance with ISO 8573-1:2010 [7:4:4]			
	Inert gases			
	Mineral oil			
	Neutral liquids			
	Water			
	Further media upon request			
Pressure differential [bar]	0			
Ambient temperature [°C]	-10 ... +35 °C			
Temperature of medium [°C]	-10 ... +80 °C			
Leak rate to EN 12266-1	A			
Corrosion resistance class CRC ¹⁾	1			

1) Corrosion resistance class 1 according to Festo standard 940 070
Components subject to low corrosion stress. Transport and storage protection. Parts that do not have primarily decorative surface requirements, e.g. in internal areas that are not visible or behind covers.

Solenoid valves VZWD, directly actuated

Technical data – Brass housing

FESTO

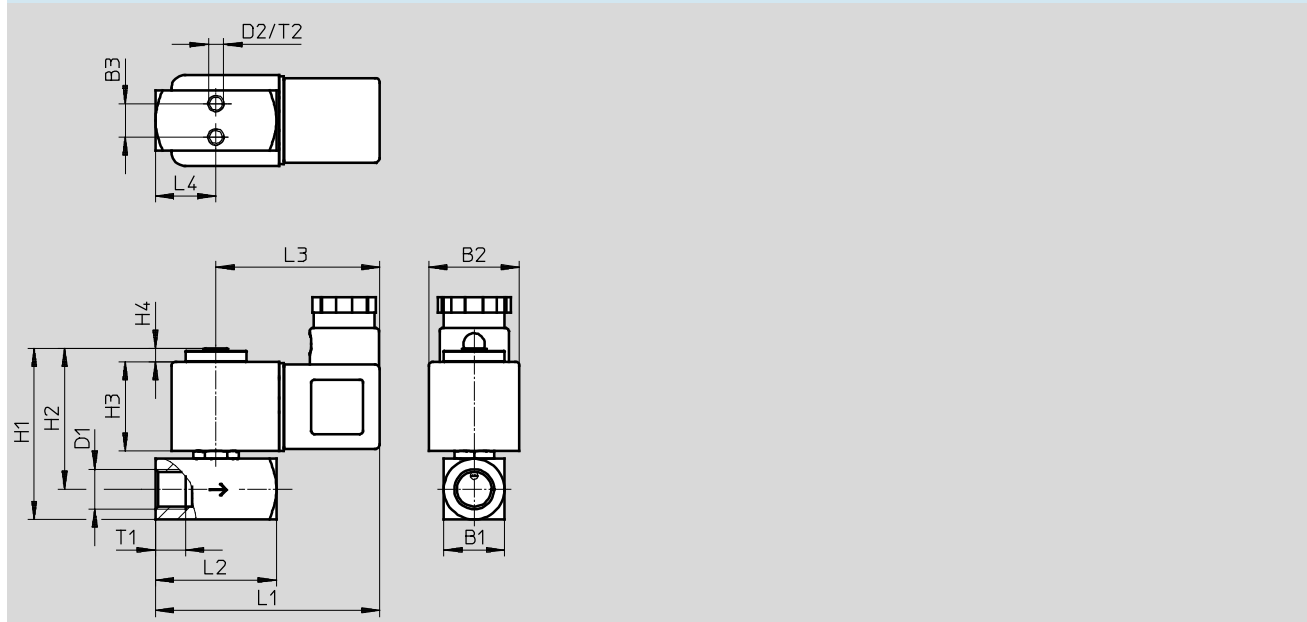
Electrical data			VZWD- ... 1	VZWD- ... 2A	VZWD- ... 3A
Electrical connection			Plug to EN 175301-803 type A, square design		
CE marking			–	73/23/EEC	73/23/EEC
Insulation class			H	F	F
Duty cycle			[%]	100	
Permissible voltage fluctuations			[%]	±10	
Coil characteristics	Direct current DC	[V]	24	–	–
	Alternating current AC	[V]	–	110	230
		[W]	6.8	–	–
	Switching power	[VA]	–	10.5	10.5
	Holding power	[VA]	–	8	7.6
		[Hz]	–	50, 60	50, 60
	Switching time on	[ms]	25		
	Switching time off	[ms]	10		

Materials		
Solenoid valves		Material number
1 Housing	High-alloy stainless steel	1.4305
	Brass	CW614N
2 Seals	FPM	
– Note on materials		Contains PWIS (paint-wetting impairment substances), RoHS-compliant

Dimensions

Download CAD data → www.festo.com/en/engineering

Milled brass housing

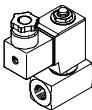


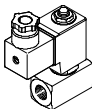
Type	B1	B2	B3	D1	D2	H1	H2	H3	H4	L1	L2	L3	L4	L5	T1	T2
VZWD-...-G1/8-10-...-50	15	30	8	G1/8	M5	52	44	30	5	70	32	54	16	–	8	5
VZWD-...-G1/8-15-...-30																
VZWD-...-G1/8-20-...-15																
VZWD-...-G1/4-10-...-50	20	30	11	G1/4	M5	57	47	30	5	74	40	54	20	–	10	5
VZWD-...-G1/4-15-...-30																
VZWD-...-G1/4-20-...-15																
VZWD-...-G1/4-25-...-8																

Solenoid valves VZWD, directly actuated

Technical data – Brass housing

FESTO

Ordering data					
	Process valve connection	Nominal size	Operating pressure	Product weight	Brass housing
		DN	[bar]	[g]	Part No. Type
	G1/4	1	0 ... 50	350	1491906 VZWD-L-M22C-M-G14-10-V-2AP4-50
					1491984 VZWD-L-M22C-M-G14-10-V-3AP4-50
					1491828 VZWD-L-M22C-M-G14-10-V-1P4-50
		1.5	0 ... 30	350	1491907 VZWD-L-M22C-M-G14-15-V-2AP4-30
					1491985 VZWD-L-M22C-M-G14-15-V-3AP4-30
					1491829 VZWD-L-M22C-M-G14-15-V-1P4-30
		2	0 ... 15	350	1491908 VZWD-L-M22C-M-G14-20-V-2AP4-15
					1491986 VZWD-L-M22C-M-G14-20-V-3AP4-15
					1491830 VZWD-L-M22C-M-G14-20-V-1P4-15
		2.5	0 ... 8	350	1491909 VZWD-L-M22C-M-G14-25-V-2AP4-8
					1491987 VZWD-L-M22C-M-G14-25-V-3AP4-8
					1491831 VZWD-L-M22C-M-G14-25-V-1P4-8

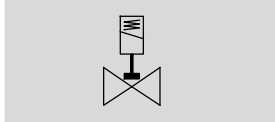
Ordering data					
	Process valve connection	Nominal size	Operating pressure	Product weight	Brass housing
		DN	[bar]	[g]	Part No. Type
	G1/8	1	0 ... 50	300	1491903 VZWD-L-M22C-M-G18-10-V-2AP4-50
					1491981 VZWD-L-M22C-M-G18-10-V-3AP4-50
					1491825 VZWD-L-M22C-M-G18-10-V-1P4-50
		1.5	0 ... 30	300	1491904 VZWD-L-M22C-M-G18-15-V-2AP4-30
					1491982 VZWD-L-M22C-M-G18-15-V-3AP4-30
					1491826 VZWD-L-M22C-M-G18-15-V-1P4-30
		2	0 ... 15	300	1491905 VZWD-L-M22C-M-G18-20-V-2AP4-15
					1491983 VZWD-L-M22C-M-G18-20-V-3AP4-15
					1491827 VZWD-L-M22C-M-G18-20-V-1P4-15

Solenoid valves VZWD, directly actuated

Technical data – Brass housing

FESTO

Function



Flow rate Kv
0.06 ... 0.4 m³/h

Nominal size (DN)
1.0 ... 6.0 mm



Connecting thread
G¹/₄, G¹/₈



General technical data								
Nominal size (DN)	1.0	1.5	2.0	2.5	3.0	4.0	5.0	6.0
Valve function	2/2-way, single solenoid, closed							
Design	Directly actuated poppet valve							
Type of mounting	In-line installation							
Actuation type	Electric							
Reset method	Mechanical spring							
Direction of flow	Non-reversible							
Type of control	Direct							
Manual override	None							
Mounting position	Any							
Sealing principle	Soft							
Max. viscosity [mm ² /s]	22							
Protection class	IP65							

Operating and environmental conditions								
Nominal size (DN)	1.0	1.5	2.0	2.5	3.0	4.0	5.0	6.0
Standard nominal flow rate [l/min]	60	95	140	170	210	310	375	430
Flow rate [m³/h]	0.06	0.09	0.13	0.16	0.2	0.3	0.35	0.4
Process valve nominal pressure (PN)	100							
Pressure differential [bar]	0							
Process valve operating medium	Compressed air in accordance with ISO 8573-1:2010 [7:4:4]							
	Inert gases							
	Mineral oil							
	Neutral liquids							
	Water							
	Further media upon request							
Ambient temperature [°C]	-10 ... +35 °C							
Temperature of medium [°C]	-10 ... +80 °C							
Leak rate to EN 12266-1	A							
Corrosion resistance class CRC ¹⁾	1							

1) Corrosion resistance class 1 according to Festo standard 940 070
Components subject to low corrosion stress. Transport and storage protection. Parts that do not have primarily decorative surface requirements, e.g. in internal areas that are not visible or behind covers.

Solenoid valves VZWD, directly actuated

Technical data – Brass housing

FESTO

Electrical data			VZWD- ... 1	VZWD- ... 2A	VZWD- ... 3A
Electrical connection			Plug to EN 175301-803 type A, square design		
CE marking			–	73/23/EEC	73/23/EEC
Insulation class			H	F	F
Duty cycle			[%]	100	
Permissible voltage fluctuations			[%]	±10	
Coil characteristics	Direct current DC	[V]	24	–	–
	Alternating current AC	[V]	–	110	230
		[W]	11	–	–
	Switching power	[VA]	–	19	18
	Holding power	[VA]	–	16	15
		[Hz]	–	50, 60	50, 60
	Switching time on	[ms]	20		
	Switching time off	[ms]	18		

Materials		
Solenoid valves		Material number
1 Housing	High-alloy stainless steel	1.4305
	Brass	CW614N
2 Seals	FPM	
– Note on materials		Contains PWIS (paint-wetting impairment substances), RoHS-compliant

Solenoid valves VZWD, directly actuated

Technical data – Brass housing

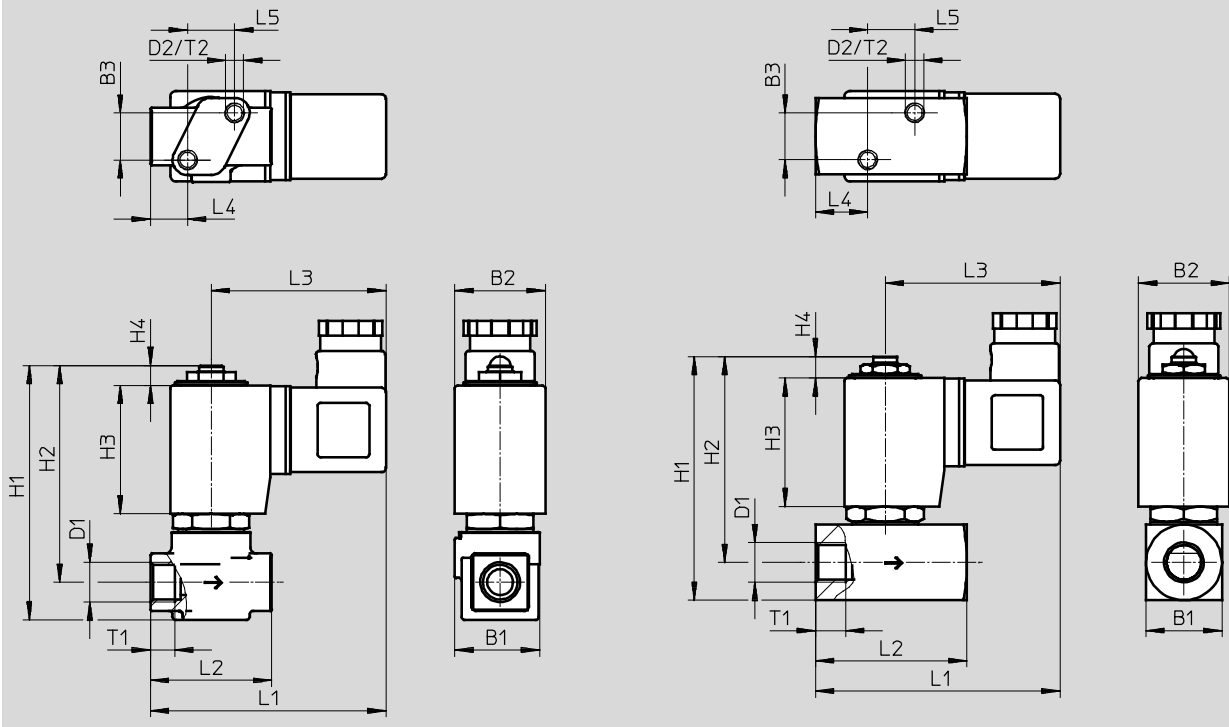
FESTO

Dimensions

Download CAD data → www.festo.com/en/engineering

Die-cast brass housing

Milled brass housing

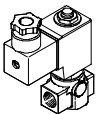


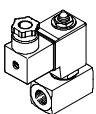
Type	B1	B2	B3	D1	D2	H1	H2	H3	H4	L1	L2	L3	L4	L5	T1	T2
VZWD-...-G1/8-10-...-90	28	30	15.5	G1/8	M6	84	72	42.5	6.5	78	40	58	12	15.5	8	6
VZWD-...-G1/8-15-...-85																
VZWD-...-G1/8-20-...-40																
VZWD-...-G1/8-25-...-22																
VZWD-...-G1/8-30-...-15																
VZWD-...-G1/8-40-...-8																
VZWD-...-G1/4-10-...-90	28	30	15.5	G1/4	M6	84	72	42.5	6.5	78	40	58	12	15.5	10	6
VZWD-...-G1/4-15-...-85																
VZWD-...-G1/4-20-...-40																
VZWD-...-G1/4-25-...-22																
VZWD-...-G1/4-30-...-15																
VZWD-...-G1/4-40-...-8																
VZWD-...-G1/8-50-...-5	25	30	15.5	G1/8	M6	81	68	42.5	7	78	40	58	12	15.5	8	6
VZWD-...-G1/8-60-...-4																
VZWD-...-G1/4-50-...-5	25	30	15.5	G1/4	M6	81	68	42.5	7	85	50	58	17	15.5	10	6
VZWD-...-G1/4-60-...-4																

Solenoid valves VZWD, directly actuated

Technical data – Brass housing

FESTO

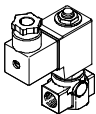
Ordering data					
	Process valve connection	Nominal size	Operating pressure	Product weight	Brass housing
		DN	[bar]	[g]	Part No. Type
	G1/4	1	0 ... 90	550	1491918 VZWD-L-M22C-M-G14-10-V-2AP4-90
					1491996 VZWD-L-M22C-M-G14-10-V-3AP4-90
					1491840 VZWD-L-M22C-M-G14-10-V-1P4-90
		1.5	0 ... 85	550	1491919 VZWD-L-M22C-M-G14-15-V-2AP4-85
					1491997 VZWD-L-M22C-M-G14-15-V-3AP4-85
					1491841 VZWD-L-M22C-M-G14-15-V-1P4-85
		2	0 ... 40	550	1491920 VZWD-L-M22C-M-G14-20-V-2AP4-40
					1491998 VZWD-L-M22C-M-G14-20-V-3AP4-40
					1491842 VZWD-L-M22C-M-G14-20-V-1P4-40
		2.5	0 ... 22	550	1491921 VZWD-L-M22C-M-G14-25-V-2AP4-22
					1491999 VZWD-L-M22C-M-G14-25-V-3AP4-22
					1491843 VZWD-L-M22C-M-G14-25-V-1P4-22
		3	0 ... 15	550	1491922 VZWD-L-M22C-M-G14-30-V-2AP4-15
					1492000 VZWD-L-M22C-M-G14-30-V-3AP4-15
					1491844 VZWD-L-M22C-M-G14-30-V-1P4-15
		4	0 ... 8	550	1491923 VZWD-L-M22C-M-G14-40-V-2AP4-8
					1492001 VZWD-L-M22C-M-G14-40-V-3AP4-8
					1491845 VZWD-L-M22C-M-G14-40-V-1P4-8

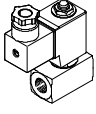
Ordering data					
	Process valve connection	Nominal size	Operating pressure	Product weight	Brass housing
		DN	[bar]	[g]	Part No. Type
	G1/4	5	0 ... 5	600	1491924 VZWD-L-M22C-M-G14-50-V-2AP4-5
					1492002 VZWD-L-M22C-M-G14-50-V-3AP4-5
					1491846 VZWD-L-M22C-M-G14-50-V-1P4-5
		6	0 ... 4	600	1491925 VZWD-L-M22C-M-G14-60-V-2AP4-4
					1492003 VZWD-L-M22C-M-G14-60-V-3AP4-4
					1491847 VZWD-L-M22C-M-G14-60-V-1P4-4

Solenoid valves VZWD, directly actuated

Technical data – Brass housing

FESTO

Ordering data					
	Process valve connection	Nominal size	Operating pressure	Product weight	Brass housing
		DN	[bar]	[g]	Part No. Type
	G1/8	1	0 ... 90	550	1491910 VZWD-L-M22C-M-G18-10-V-2AP4-90
					1491988 VZWD-L-M22C-M-G18-10-V-3AP4-90
					1491832 VZWD-L-M22C-M-G18-10-V-1P4-90
		1.5	0 ... 85	550	1491911 VZWD-L-M22C-M-G18-15-V-2AP4-85
					1491989 VZWD-L-M22C-M-G18-15-V-3AP4-85
					1491833 VZWD-L-M22C-M-G18-15-V-1P4-85
		2	0 ... 40	550	1491912 VZWD-L-M22C-M-G18-20-V-2AP4-40
					1491990 VZWD-L-M22C-M-G18-20-V-3AP4-40
					1491834 VZWD-L-M22C-M-G18-20-V-1P4-40
		2.5	0 ... 22	550	1491913 VZWD-L-M22C-M-G18-25-V-2AP4-22
					1491991 VZWD-L-M22C-M-G18-25-V-3AP4-22
					1491835 VZWD-L-M22C-M-G18-25-V-1P4-22
		3	0 ... 15	550	1491914 VZWD-L-M22C-M-G18-30-V-2AP4-15
					1491992 VZWD-L-M22C-M-G18-30-V-3AP4-15
					1491836 VZWD-L-M22C-M-G18-30-V-1P4-15
		4	0 ... 8	550	1491915 VZWD-L-M22C-M-G18-40-V-2AP4-8
					1491993 VZWD-L-M22C-M-G18-40-V-3AP4-8
					1491837 VZWD-L-M22C-M-G18-40-V-1P4-8

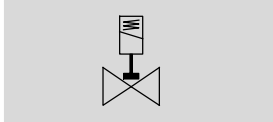
Ordering data					
	Process valve connection	Nominal size	Operating pressure	Product weight	Brass housing
		DN	[bar]	[g]	Part No. Type
	G1/8	5	0 ... 5	600	1491916 VZWD-L-M22C-M-G18-50-V-2AP4-5
					1491994 VZWD-L-M22C-M-G18-50-V-3AP4-5
					1491838 VZWD-L-M22C-M-G18-50-V-1P4-5
		6	0 ... 4	600	1491917 VZWD-L-M22C-M-G18-60-V-2AP4-4
					1491995 VZWD-L-M22C-M-G18-60-V-3AP4-4
					1491839 VZWD-L-M22C-M-G18-60-V-1P4-4

Solenoid valves VZWD, directly actuated

Technical data – Stainless steel housing

FESTO

Function



Flow rate Kv
0.06 ... 0.4 m³/h

Connecting thread
G¹/₄, G¹/₈



General technical data								
Nominal size (DN)	1.0	1.5	2.0	2.5	3.0	4.0	5.0	6.0
Valve function	2/2-way, single solenoid, closed							
Design	Directly actuated poppet valve							
Type of mounting	In-line installation							
Actuation type	Electric							
Reset method	Mechanical spring							
Type of control	Direct							
Manual override	None							
Mounting position	Any							
Sealing principle	Soft							
Direction of flow	Non-reversible							
Max. viscosity [mm ² /s]	22							
Protection class	IP65							

Operating and environmental conditions								
Nominal size (DN)	1.0	1.5	2.0	2.5	3.0	4.0	5.0	6.0
Standard nominal flow rate [l/min]	60	95	140	170	210	310	375	430
Flow rate [m ³ /h]	0.06	0.09	0.13	0.16	0.2	0.3	0.35	0.4
Process valve nominal pressure (PN)	100							
Process valve operating medium	Compressed air in accordance with ISO 8573-1:2010 [7:4:4]							
	Inert gases							
	Mineral oil							
	Neutral liquids							
	Water							
	Further media upon request							
Pressure differential [bar]	0							
Ambient temperature [°C]	−10 ... +35 °C							
Temperature of medium [°C]	−10 ... +80 °C							
Leak rate to EN 12266-1	A							
Corrosion resistance class CRC ¹⁾	3							

- 1) Corrosion resistance class 3 according to Festo standard 940 070
Components subject to high corrosion stress. Externally visible parts with primarily decorative surface requirements which are in direct contact with a normal industrial environment or media such as solvents and cleaning agents.

Solenoid valves VZWD, directly actuated

Technical data – Stainless steel housing

FESTO

Electrical data			VZWD- ... 1	VZWD- ... 2A	VZWD- ... 3A
Electrical connection			Plug to EN 175301-803 type A, square design		
CE marking			–	73/23/EEC	73/23/EEC
Insulation class			H	F	F
Duty cycle			[%]	100	
Permissible voltage fluctuations			[%]	±10	
Coil characteristics	Direct current DC	[V]	24	–	–
	Alternating current AC	[V]	–	110	230
		[W]	11	–	–
	Switching power	[VA]	–	10.5	10.5
	Holding power	[VA]	–	8	7.6
		[Hz]	–	50, 60	50, 60
	Switching time on	[ms]	20		
	Switching time off	[ms]	18		

Materials		
Solenoid valves		Material number
1 Housing	High-alloy stainless steel	1.4305
2 Seals	FPM	
– Note on materials		Contains PWIS (paint-wetting impairment substances), RoHS-compliant

Dimensions

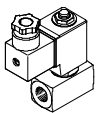
[Download CAD data → www.festo.com/en/engineering](http://www.festo.com/en/engineering)

Type	B1	B2	B3	D1	D2	H1	H2	H3	H4	L1	L2	L3	L4	L5	T1	T2
VZWD-...-G1/8-50-...-5	25	30	15.5	G1/8	M6	81	68	42.5	7	78	40	58	12	15.5	8	6
VZWD-...-G1/8-60-...-4																
VZWD-...-G1/4-50-...-5	25	30	15.5	G1/4	M6	81	68	42.5	7	85	50	58	17	15.5	10	6
VZWD-...-G1/4-60-...-4																

Solenoid valves VZWD, directly actuated

Technical data – Stainless steel housing

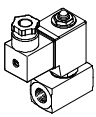
FESTO

Ordering data – Solenoid valve VZWD					
	Process valve connection	Nominal size DN	Operating pressure [bar]	Product weight [g]	Stainless steel casting housing
					Part No. Type
	G1/4	1	0 ... 90	650	1491934 VZWD-L-M22C-M-G14-10-V-2AP4-90-R1
					1492012 VZWD-L-M22C-M-G14-10-V-3AP4-90-R1
					1491856 VZWD-L-M22C-M-G14-10-V-1P4-90-R1
		1.5	0 ... 85	650	1491935 VZWD-L-M22C-M-G14-15-V-2AP4-85-R1
					1492013 VZWD-L-M22C-M-G14-15-V-3AP4-85-R1
					1491857 VZWD-L-M22C-M-G14-10-V-1P4-90-R1
		2	0 ... 40	650	1491936 VZWD-L-M22C-M-G14-20-V-2AP4-40-R1
					1492014 VZWD-L-M22C-M-G14-20-V-3AP4-40-R1
					1491858 VZWD-L-M22C-M-G14-20-V-1P4-40-R1
		2.5	0 ... 22	650	1491937 VZWD-L-M22C-M-G14-25-V-2AP4-22-R1
					1492015 VZWD-L-M22C-M-G14-25-V-3AP4-22-R1
					1491859 VZWD-L-M22C-M-G14-25-V-1P4-22-R1
		3	0 ... 15	650	1491938 VZWD-L-M22C-M-G14-30-V-2AP4-15-R1
					1492016 VZWD-L-M22C-M-G14-30-V-3AP4-15-R1
					1491860 VZWD-L-M22C-M-G14-30-V-1P4-15-R1
		4	0 ... 8	650	1491939 VZWD-L-M22C-M-G14-40-V-2AP4-8-R1
					1492017 VZWD-L-M22C-M-G14-40-V-3AP4-8-R1
					1491861 VZWD-L-M22C-M-G14-40-V-1P4-8-R1
		5	0 ... 5	650	1491940 VZWD-L-M22C-M-G14-50-V-2AP4-5-R1
					1492018 VZWD-L-M22C-M-G14-50-V-3AP4-5-R1
					1491862 VZWD-L-M22C-M-G14-50-V-1P4-5-R1
		6	0 ... 4	650	1491941 VZWD-L-M22C-M-G14-60-V-2AP4-4-R1
					1492019 VZWD-L-M22C-M-G14-60-V-3AP4-4-R1
					1491863 VZWD-L-M22C-M-G14-60-V-1P4-4-R1

Solenoid valves VZWD, directly actuated

Technical data – Stainless steel housing

FESTO

Ordering data – Solenoid valve VZWD						
	Process valve connection	Nominal size DN	Operating pressure [bar]	Product weight [g]	Stainless steel casting housing	
					Part No.	Type
	G1/8	1	0 ... 90	500	1491926	VZWD-L-M22C-M-G18-10-V-2AP4-90-R1
					1492004	VZWD-L-M22C-M-G18-10-V-3AP4-90-R1
					1491848	VZWD-L-M22C-M-G18-10-V-1P4-90-R1
		1.5	0 ... 85	500	1491927	VZWD-L-M22C-M-G18-15-V-2AP4-85-R1
					1492005	VZWD-L-M22C-M-G18-15-V-3AP4-85-R1
					1491849	VZWD-L-M22C-M-G18-15-V-1P4-85-R1
		2	0 ... 40	500	1491928	VZWD-L-M22C-M-G18-20-V-2AP4-40-R1
					1492006	VZWD-L-M22C-M-G18-20-V-3AP4-40-R1
					1491850	VZWD-L-M22C-M-G18-20-V-1P4-40-R1
		2.5	0 ... 22	500	1491929	VZWD-L-M22C-M-G18-25-V-2AP4-22-R1
					1492007	VZWD-L-M22C-M-G18-25-V-3AP4-22-R1
					1491851	VZWD-L-M22C-M-G18-25-V-1P4-22-R1
		3	0 ... 15	500	1491930	VZWD-L-M22C-M-G18-30-V-2AP4-15-R1
					1492008	VZWD-L-M22C-M-G18-30-V-3AP4-15-R1
					1491852	VZWD-L-M22C-M-G18-30-V-1P4-15-R1
		4	0 ... 8	500	1491931	VZWD-L-M22C-M-G18-40-V-2AP4-8-R1
					1492009	VZWD-L-M22C-M-G18-40-V-3AP4-8-R1
					1491853	VZWD-L-M22C-M-G18-40-V-1P4-8-R1
		5	0 ... 5	500	1491932	VZWD-L-M22C-M-G18-50-V-2AP4-5-R1
					1492010	VZWD-L-M22C-M-G18-50-V-3AP4-5-R1
					1491854	VZWD-L-M22C-M-G18-50-V-1P4-5-R1
		6	0 ... 4	500	1491933	VZWD-L-M22C-M-G18-60-V-2AP4-4-R1
					1492011	VZWD-L-M22C-M-G18-60-V-3AP4-4-R1
					1491855	VZWD-L-M22C-M-G18-60-V-1P4-4-R1