

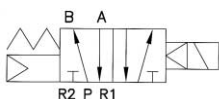
# SV-300 Series

5 Port Pilot Type / Elastic Seal

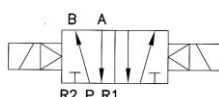
In-line Mounting Type

## 5 Port / 2 Position

SV-310 (Portsize : PT3/8)

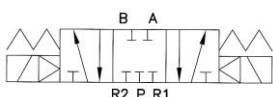


SV-320 (Portsize : PT3/8)

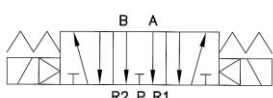


## 5 Port / 3 Position

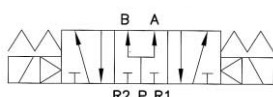
SV-330 (Closed Center)



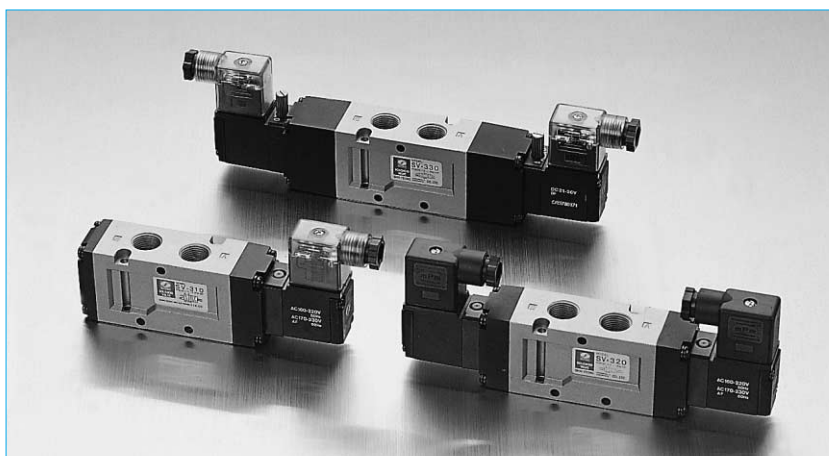
SV-340 (Exhaust Center)



SV-350 (Pressure Center)



- Width-32mm
- Large flow capacity  
-Cv 2.5  
Effective area-45mm<sup>2</sup>
- Low power consumption  
-1.8W(DC)
- Various electrical entries



## Standard Specifications

Model no.	SV-310	SV-320	SV-330	SV-340	SV-350
Media	Air or inert gases				
Pressure range(kgf/cm <sup>2</sup> )	1.5~9.9	1~9.9	1.5~9.9		
Effective area mm <sup>2</sup> (Cv)	45(2.5)	42(2.5)	36(2.0)	36(2.0)	36(2.0)
Ambient and media temp.	Max. 50 °C				
Response time(5kgf/cm <sup>2</sup> )	Below 30ms		Below 50ms		
Max. cycles/second	5c/s		3c/s		
Lubrication	Not required				
Manual override operation	Non-locking push/Slotted locking type				
Shock/Vibration resistance	30G/5G(8.3~2000HZ)				
Protective structure	Dust-proof				
Rated voltage of coil	AC 50/60HZ 100V, 220V DC 12V, 24V				
Allowable voltage tolerance	-15%~+10% of rated voltage				
Coil insulation	Class B or equivalent (130 °C)				
Value of temp. elevated	Below 45 °C (at rated voltage)				
Apparent power	AC	Starting	5.6VA(50HZ), 5.0VA(60HZ)		
		Holding	4.5VA(50HZ), 3.8VA(60HZ)		
Power consumption	DC	1.8W			
Weight(kgf)	0.35	0.45	0.55	0.35	0.55
Surge suppressor	AC, DC : Varistor				
Indicator lamp	LED				

## How to Order

SV - 3 1 0 - 2 L

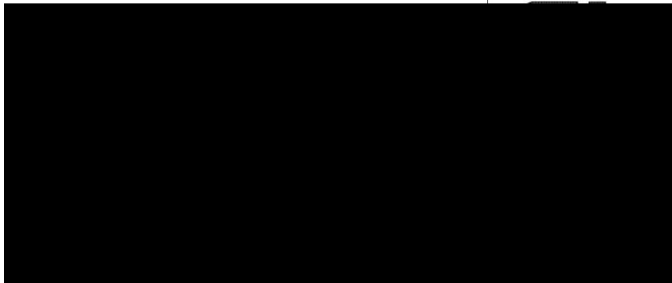
Port size  
(PT 3/8)

Symbol	
1	Single solenoid
2	Double solenoid
3	Closed center
4	Exhaust center
5	Pressure center

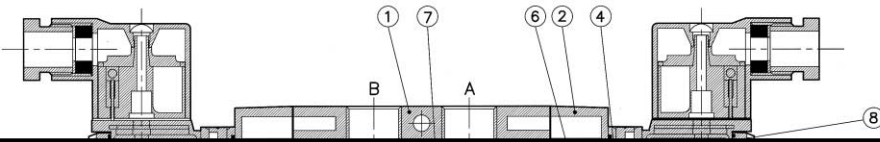
Voltage	
1	AC 100V
2	AC 220V
3	DC 12V
4	DC 24V

Electrical entry	
L	Lead wire
D	DIN terminal
DL	DIN terminal with lamp
DS	DIN terminal with lamp & surge suppressor

2 Position Single Solenoid



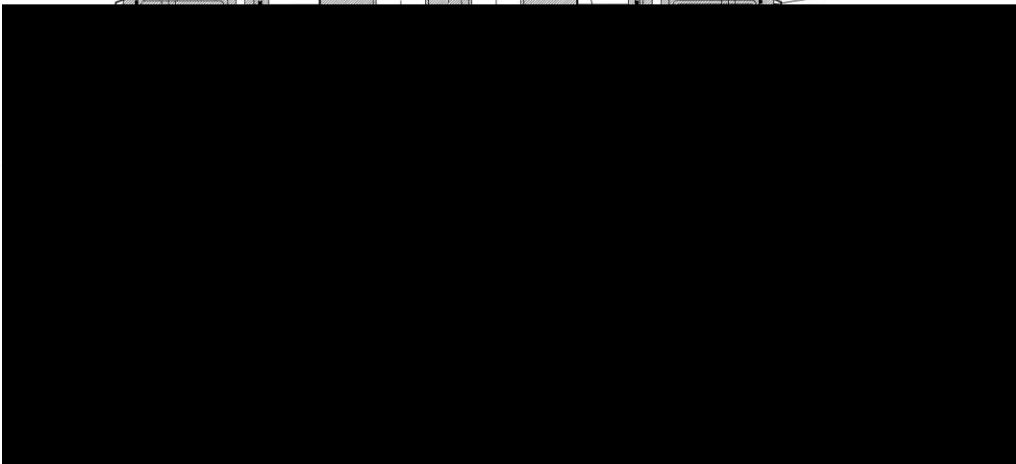
2 Position Double Solenoid



Main Parts

No.	Description	Material
①	Body	ADC-12
②	Adapter	ADC-12
③	End Cover	ADC-12
④	Pilot Body	Polyacetal
⑤	Pilot Cover	Plastic
⑥	Piston	Polyacetal
⑦	Spool	Al · NBR
⑧	Coil Ass'y	

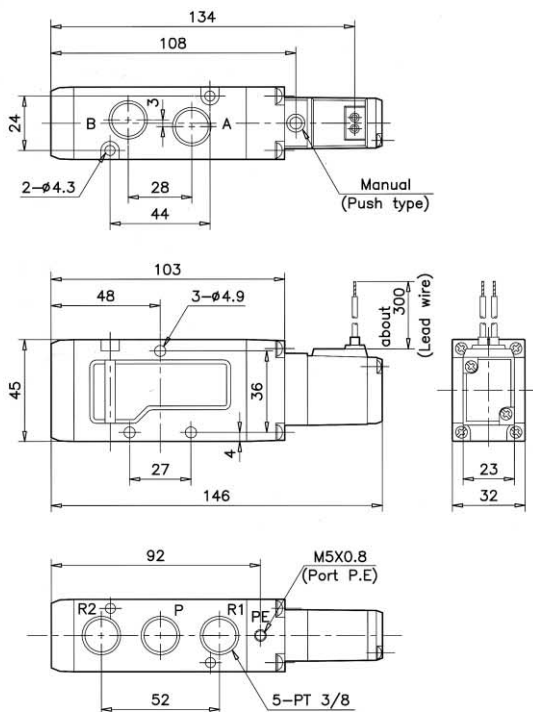
3 P



Dimensions / 2 Position Single

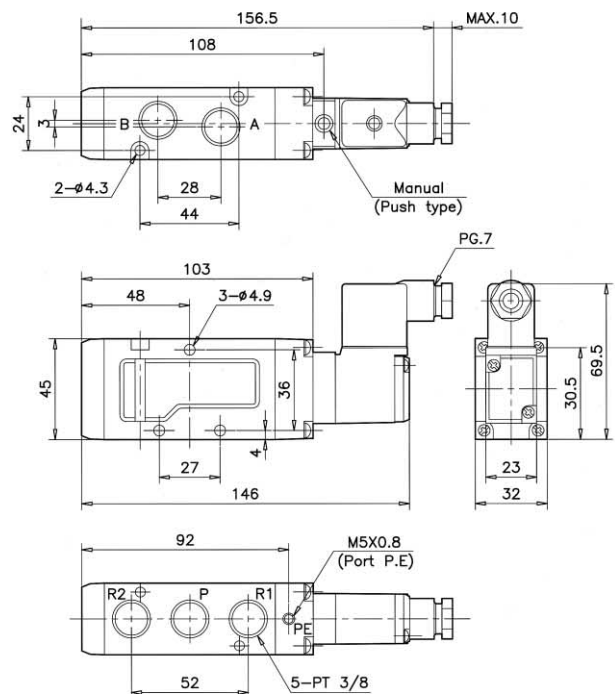
Lead wire type(L)

SV - 310 - ○L



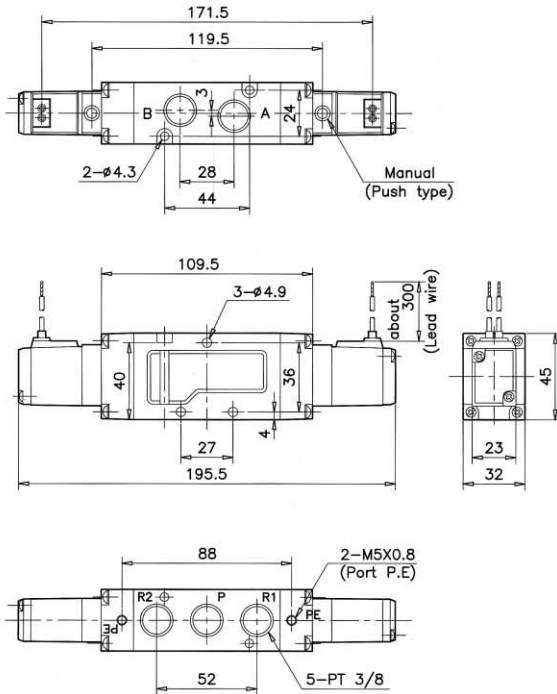
DIN terminal type(D, DL, DS)

SV - 310 - ○  
D  
DL  
DS



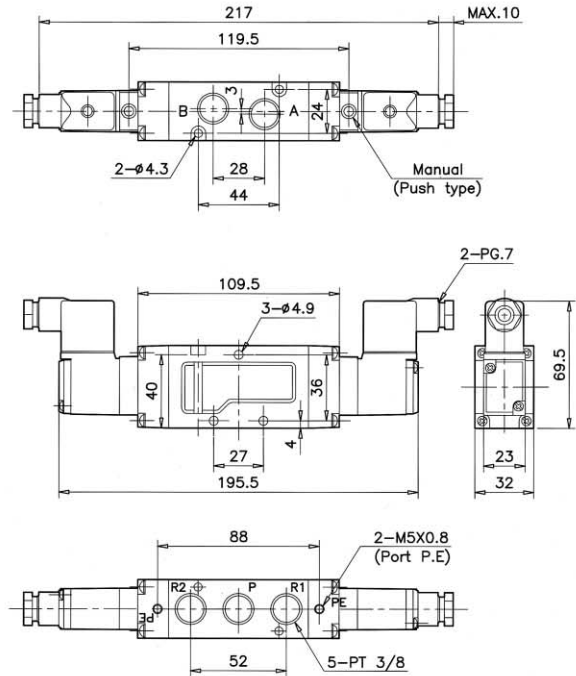
Lead wire type(L)

SV - 320 - ○ L



DIN terminal(D, DL, DS)

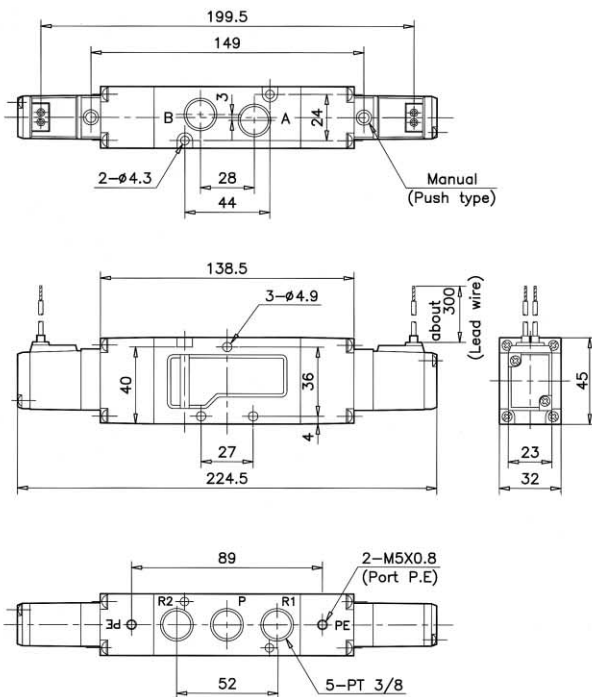
SV - 320 - ○  $\begin{matrix} D \\ DL \\ DS \end{matrix}$



Dimensions / 3 Position Closed Center · Exhaust Center · Pressure Center

Lead wire type(L)

SV -  $\frac{3}{5}$  - ○ L



DIN terminal type(D, DL, DS)

SV -  $\frac{3}{5}$  - ○  $\begin{matrix} D \\ DL \\ DS \end{matrix}$

