

Mechanical Valve(SMV)



SMV 100 Series

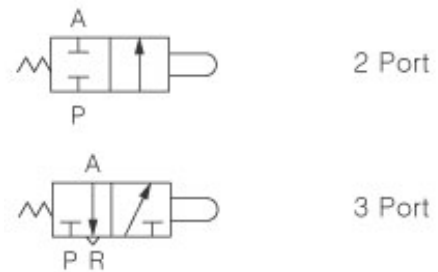


How to Order

SMV 1 20 - 01 - 01

- 1 Mechanical Valve
- 2 Number of Port
20 - 2 Port
30 - 3 Port
- 3 Port Size
01 - 1/8"
- 4 Type of actuator
00 - Standard
01 - Roller lever
30 - Push button
34 - Selector

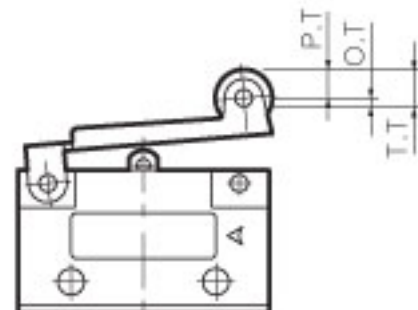
Symbol



Specification

Fluid	Compressed air
Operating pressure	0~0.97MPa [0~9.9 kgf/cm ²]
Ambient and media temperature	0 ~ 60°C
Effective orifice(Cv)	2.5mm ² (0.14)
Recommended lubricator	Unnecessary/If necessary, Turbin oil (ISO VG32)
Port Size	Rc(PT) 1/8

Operating point of Mechanical Valve



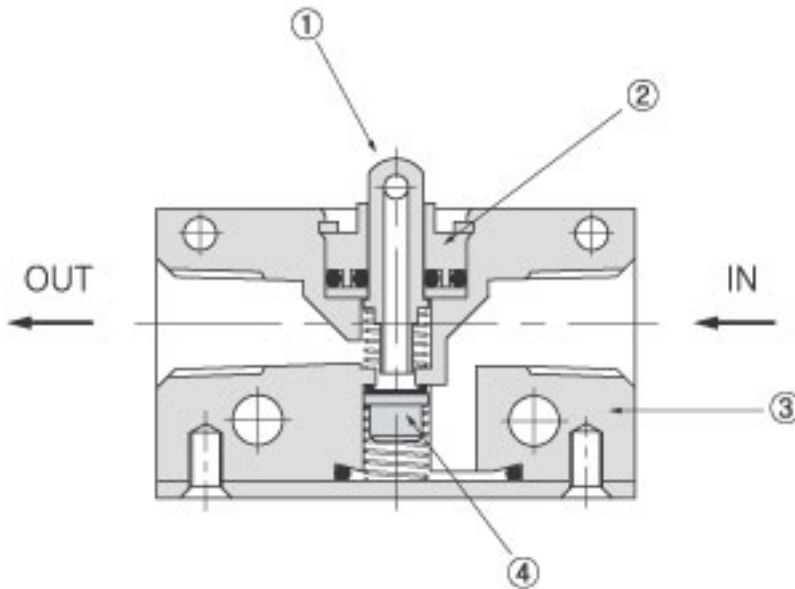
- P.T : Working distance from the free position to the operating position of the actuator
- O.T : Working distance from the operating position to the operating limit of the actuator
- T.T : Working distance from the free position to the operating limit of the actuator.

SMV Series



Structure / Parts

SMV 100



No.	PARTS	MATERIAL
1	Rod	A2011
2	Rod guide	Bs
3	Body	ZnDC
4	Check valve	NBR

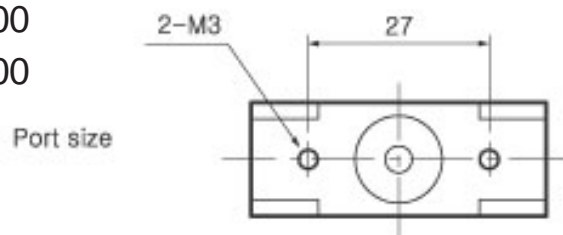
Dimensions(mm)

SMV 120-01-00

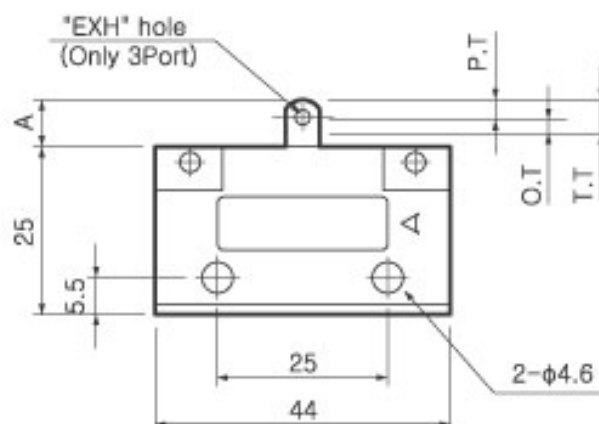
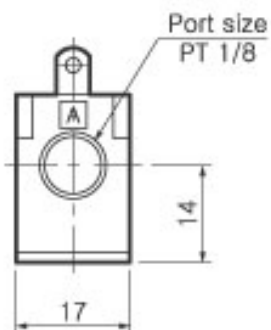
121-01-00

130-01-00

131-01-00



Port size



Model	A
SMV120	7.5
SMV130	
SMV121	5.0
SMV131	
P.T	1
O.T	2
T.T	3

SMV Series

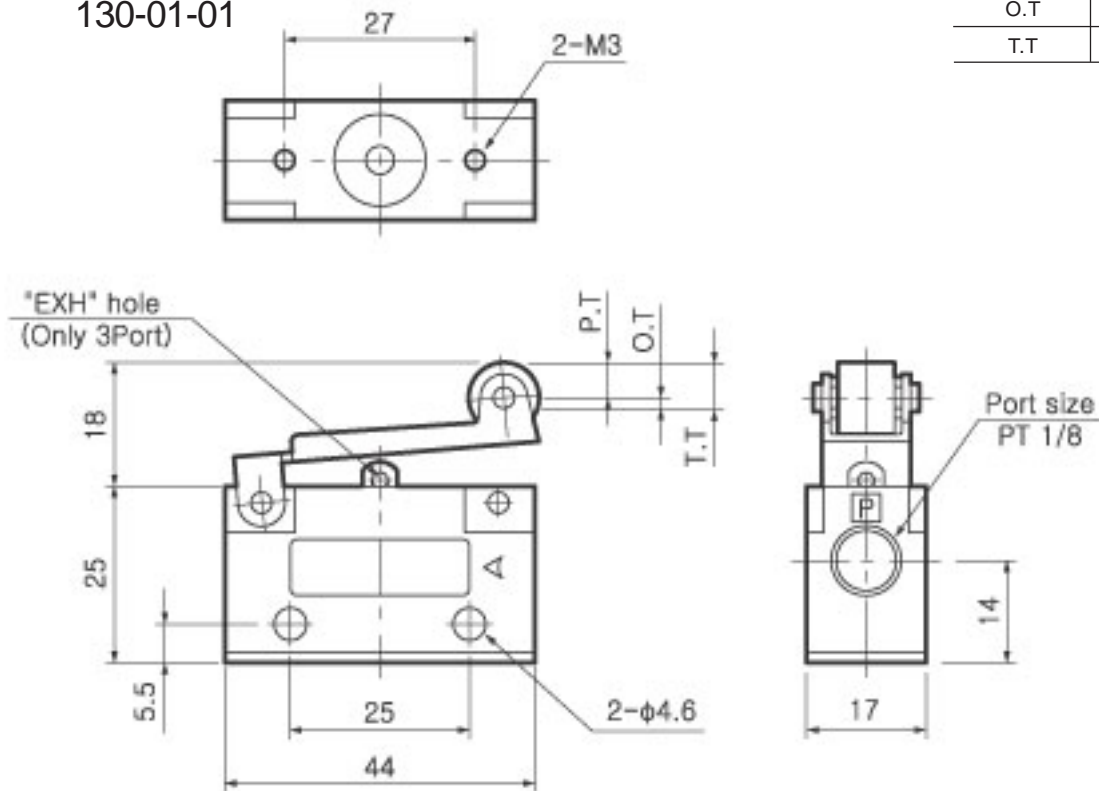


Dimensions(mm)

SMV 120-01-01

130-01-01

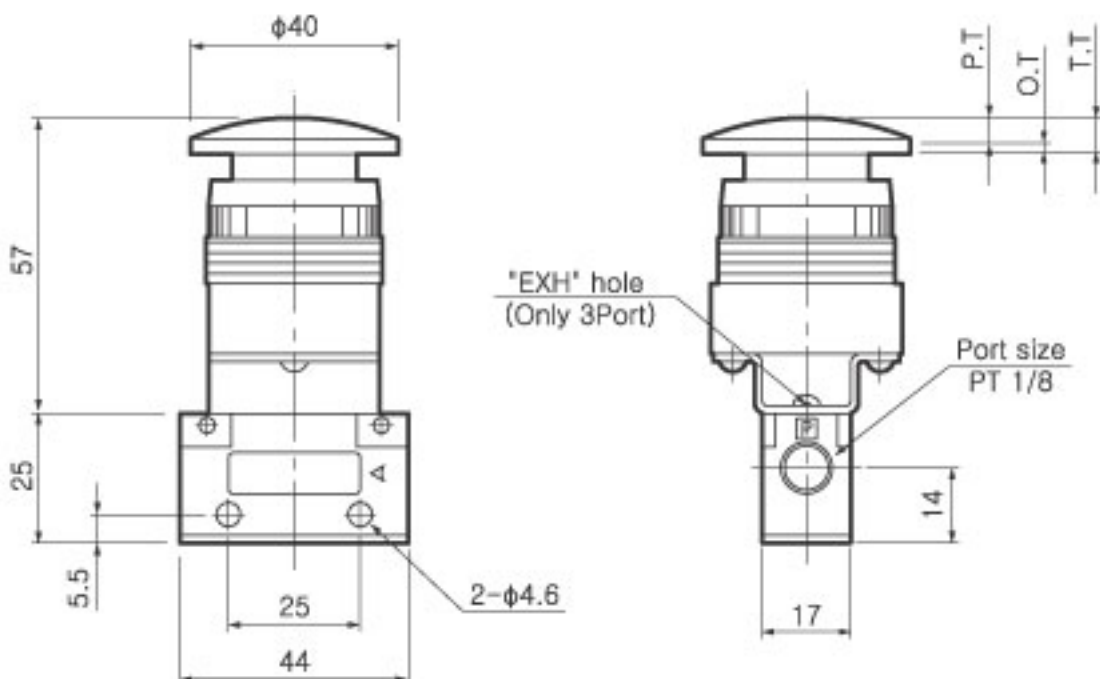
P.T	1.5
O.T	4.0
T.T	5.5



SMV 120-01-30

130-01-30

P.T	5.4
O.T	1.6
T.T	7.0



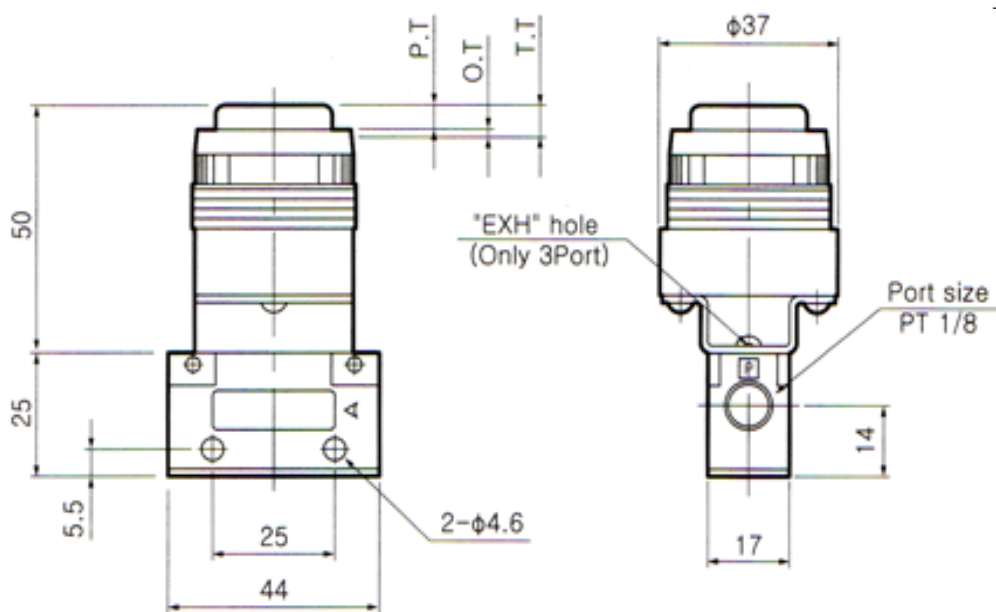
SMV Series



Dimensions(mm)

SMV 120-01-32
130-01-32

P.T	5.4
O.T	1.6
T.T	7.0



SMV 120-01-34
130-01-34

T.T	90°C
-----	------

