

Valvole a comando manuale
Manually operated Valves

Dati Tecnici

Pressione d'esercizio: 0÷10 Bar (0÷1,00 MPa)
Peso: 0,093 Kg

Technical data

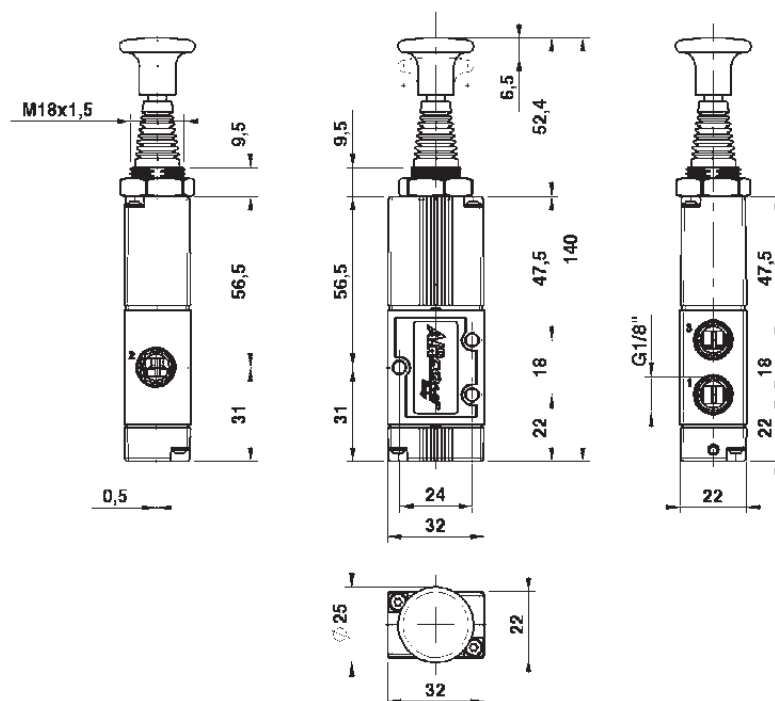
Working pressure: 0÷10 Bar (0÷1,00 MPa)
Weight: 0,093 Kg

Codici di ordinazione
Order codes

	CODE 1202323001	REF. VM 1/8" 22 3 TA ML NC P
	1202323002	VM 1/8" 22 3 TA BS OO P

Valvole a taretto 3/2

3/2 Detented push-pull operated valves



Dati Tecnici

Pressione d'esercizio: 0÷10 Bar (0÷1,00 MPa)
Peso: 0,094 Kg

Technical data

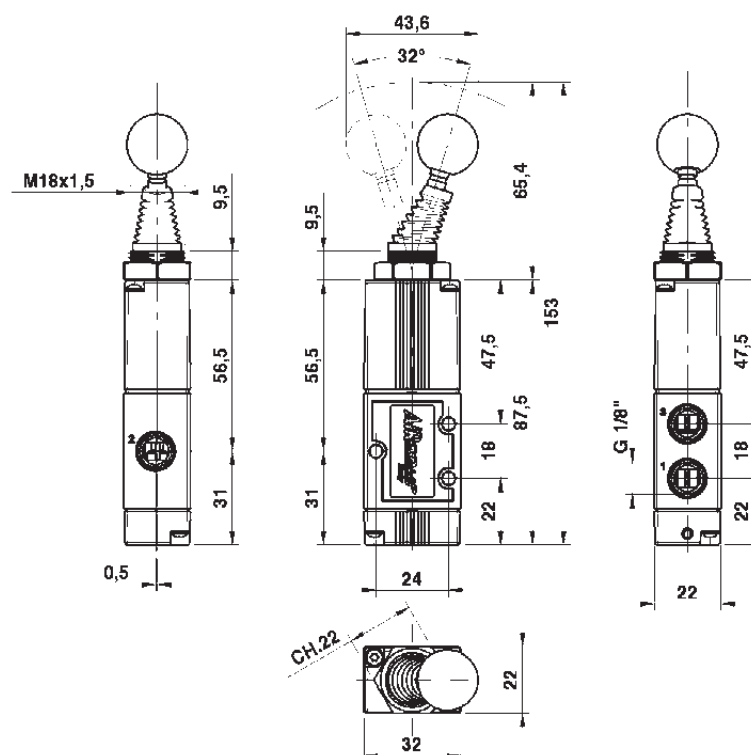
Working pressure: 0÷10 Bar (0÷1,00 MPa)
Weight: 0,094 Kg

Codici di ordinazione
Order codes

	CODE 1202323004	REF. VM 1/8" 22 3 LV ML NC P
	1202323005	VM 1/8" 22 3 LV BS OO P

Valvole a leva assiale 3/2

3/2 Axial lever valves



Dati Tecnici

Pressione d'esercizio: 0÷10 Bar (0÷1,00 MPa)
Peso: 0,091 Kg

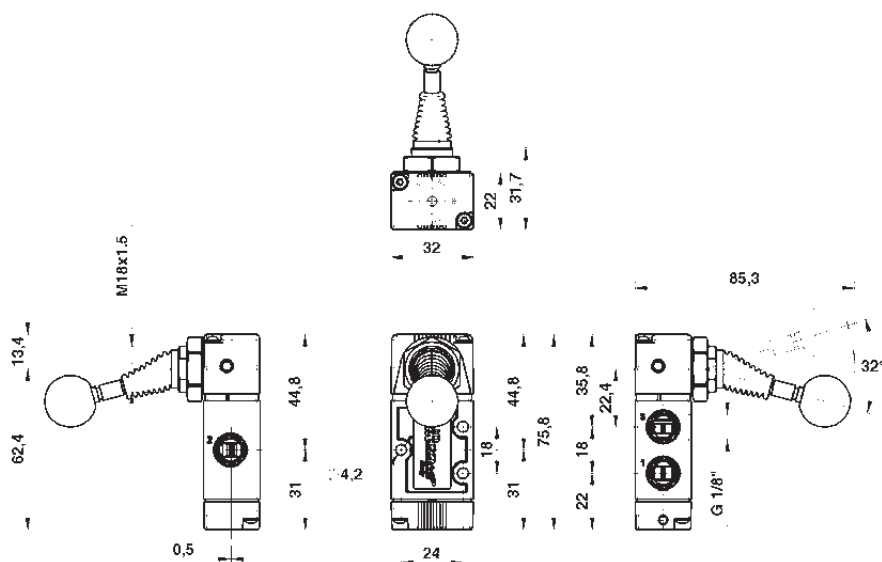
Technical data

Working pressure: 0÷10 Bar (0÷1,00 MPa)
Weight: 0,091 Kg

Codici di ordinazione Order codes

	CODE	REF.
	120323006	VM 1/8" 22 3 L9 ML NC P
	120323007	VM 1/8" 22 3 L9 BS OO P

Valvole a leva 90° 3/2 3/2 90° Lever valves



Dati Tecnici

Pressione d'esercizio: 0÷10 Bar (0÷1,00 MPa)
Peso: 0,100 Kg

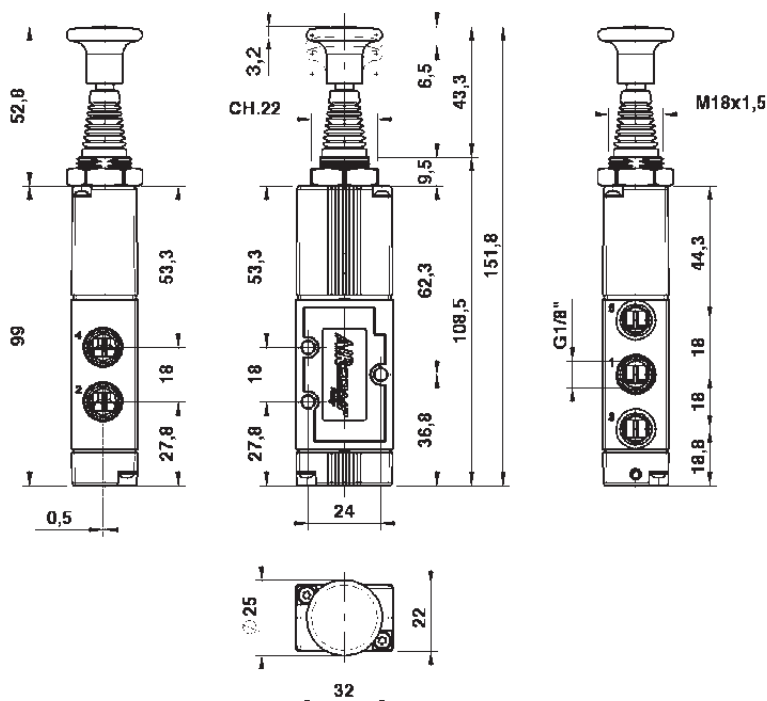
Technical data

Working pressure: 0÷10 Bar (0÷1,00 MPa)
Weight: 0,100 Kg

Codici di ordinazione Order codes

	CODE	REF.
	120325001	VM 1/8" 22 5 TA ML OO P
	120325002	VM 1/8" 22 5 TA BS OO P
	120326013	VM 1/8" 22 6 TA RC CC P
	120326014	VM 1/8" 22 6 TA RC CA P
	120326015	VM 1/8" 22 6 TA RC CP P

Valvole a tretto 5/2 - 5/3 5/2 - 5/3 Detented push-pull operated valves



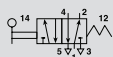

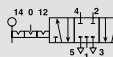
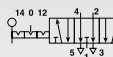
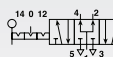
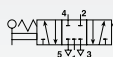


Dati Tecnici

Pressione d'esercizio: 0÷10 Bar (0÷1,00 MPa)
Peso: 0,099 Kg

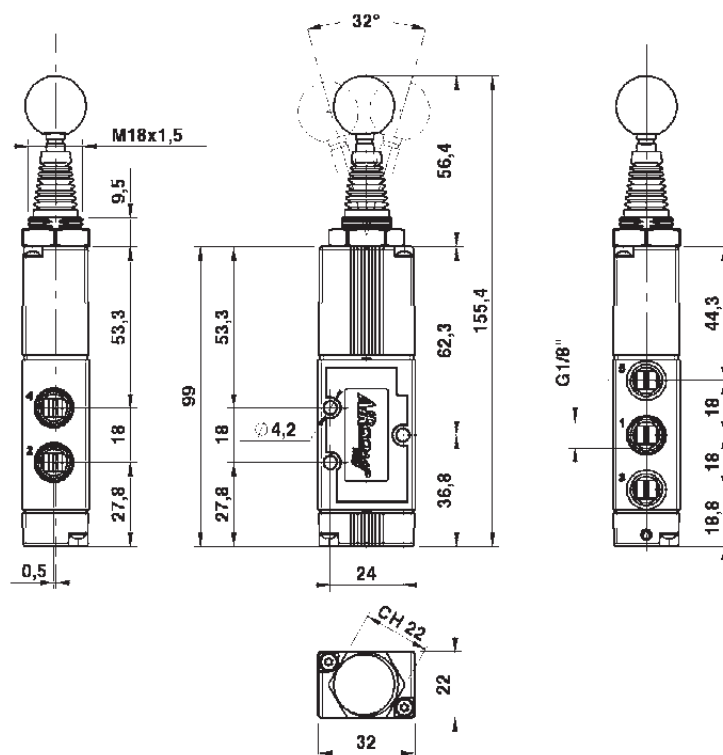
Technical data

Working pressure: 0÷10 Bar (0÷1,00 MPa)
Weight: 0,099 Kg

Codici di ordinazione Order codes

	CODE	REF.
	1202325003	VM 1/8" 22 5 LV ML OO P
	1202325004	VM 1/8" 22 5 LV BS OO P
	1202326001	VM 1/8" 22 6 LV ST CC P
	1202326002	VM 1/8" 22 6 LV ST CA P
	1202326003	VM 1/8" 22 6 LV ST CP P
	1202326004	VM 1/8" 22 6 LV RC CC P
	1202326005	VM 1/8" 22 6 LV RC CA P
	1202326006	VM 1/8" 22 6 LV RC CP P

Valvole a leva assiale 5/2 - 5/3 5/2 - 5/3 Axial lever valves



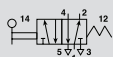
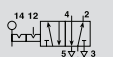
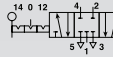
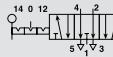
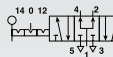

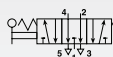
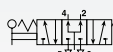
Dati Tecnici

Pressione d'esercizio: 0÷10 Bar (0÷1,00 MPa)
Peso: 0,101 Kg

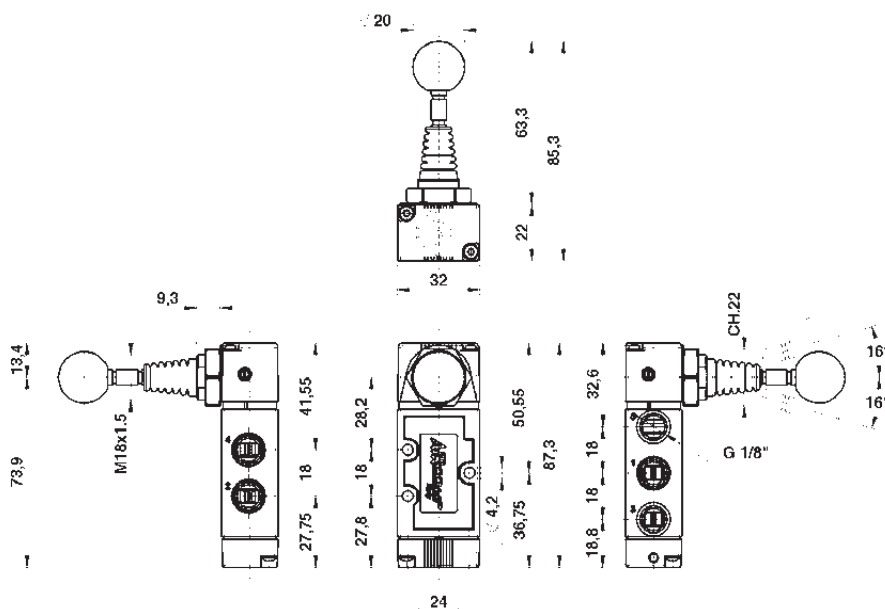
Technical data

Working pressure: 0÷10 Bar (0÷1,00 MPa)
Weight: 0,101 Kg

Codici di ordinazione Order codes

	CODE	REF.
	1202325005	VM 1/8" 22 5 L9 ML OO P
	1202325006	VM 1/8" 22 5 L9 BS OO P
	1202326007	VM 1/8" 22 6 L9 ST CC P
	1202326008	VM 1/8" 22 6 L9 ST CA P
	1202326009	VM 1/8" 22 6 L9 ST CP P
	1202326010	VM 1/8" 22 6 L9 RC CC P
	1202326011	VM 1/8" 22 6 L9 RC CA P
	1202326012	VM 1/8" 22 6 L9 RC CP P

Valvole a leva 90° 5/2 - 5/3 5/2 - 5/3 90° Lever valves



Dati Tecnici

Pressione d'esercizio: 0÷10 Bar (0÷1,00 MPa)
Forza d'azionamento (a 6 Bar): 39 N
Peso: 0,060 Kg

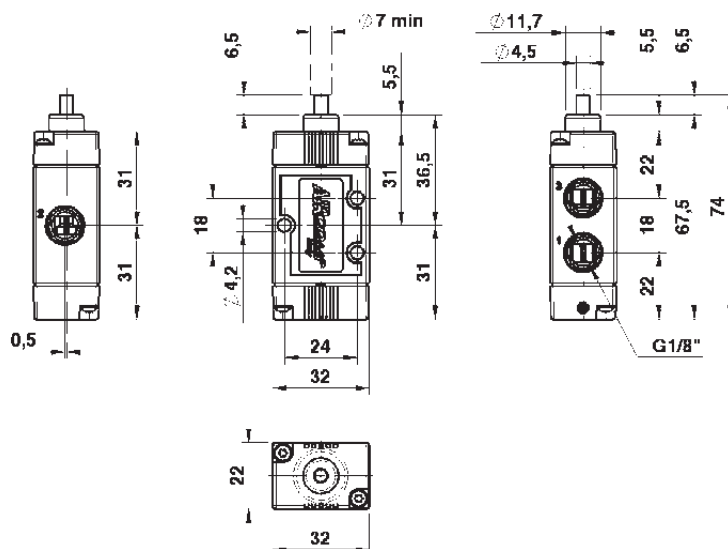
Technical data

Working pressure: 0÷10 Bar (0÷1,00 MPa)
Thrust force (6 Bar): 39 N
Weight: 0,060 Kg

Codici di ordinazione Order codes

	CODE	REF.
	1202423001	ME 1/8" 22 3 PU ML NC P
	1202423002	ME 1/8" 22 3 PU ML NO P

Valvole a puntale 3/2 NC-NO 3/2 NC-NO pushrod valves



Dati Tecnici

Pressione d'esercizio: 1÷10 Bar (0,10÷1,00 MPa)
Forza d'azionamento (a 6 Bar): 9 N
Peso: 0,072 Kg

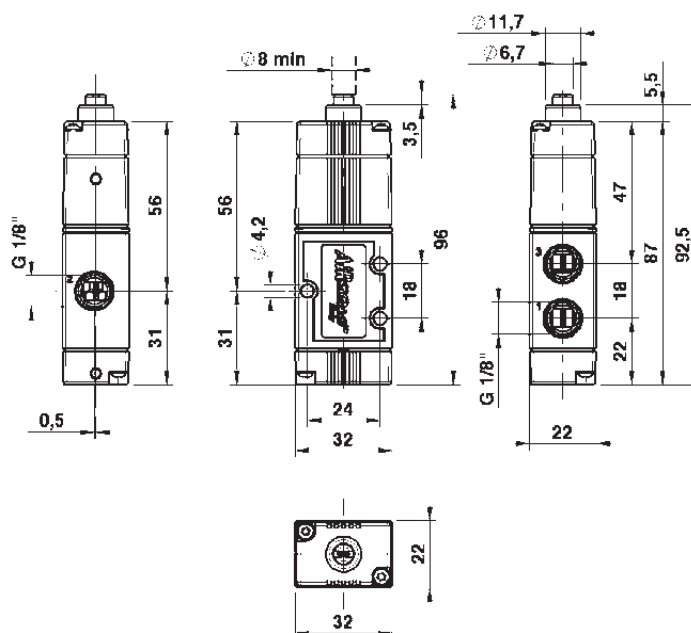
Technical data

Working pressure: 1÷10 Bar (0,10÷1,00 MPa)
Thrust force (6 Bar): 9 N
Weight: 0,072 Kg

Codici di ordinazione Order codes

	CODE	REF.
	1202523001	ME 1/8" 22 3 PS PM NC P
	1202523002	ME 1/8" 22 3 PS PM NO P

Valvole a puntale servopilotate 3/2 NC-NO 3/2 NC-NO Sensible pushrod valves



Valvole a comando meccanico Mechanically operated Valves

Dati Tecnici

Pressione d'esercizio: 1÷10 Bar (0,10÷1,00 MPa)
Forza d'azionamento (a 6 Bar): 9 N
Peso: 0,075 Kg

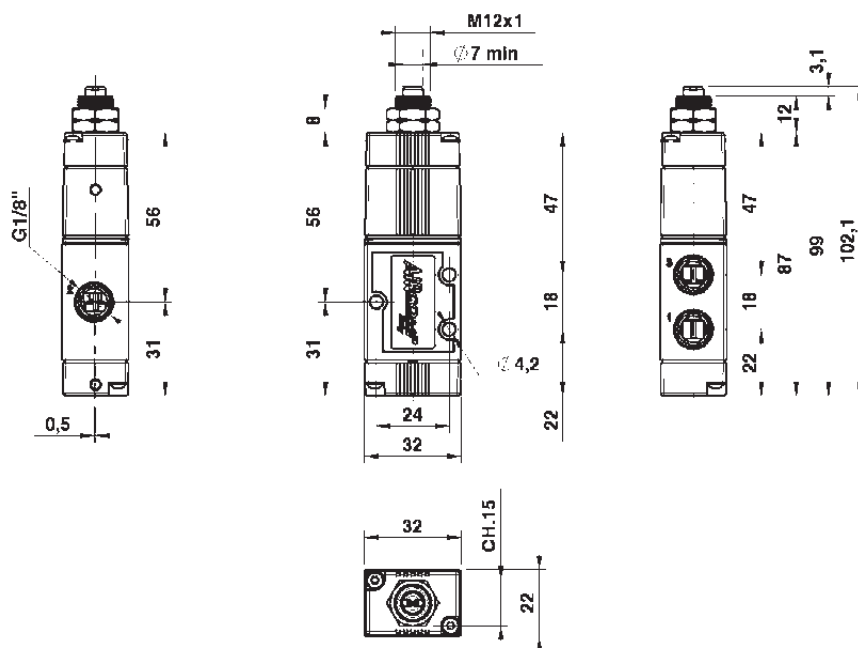
Technical data

Working pressure: 1÷10 Bar (0,10÷1,00 MPa)
Thrust force (6 Bar): 9 N
Weight: 0,075 Kg

Codici di ordinazione Order codes

CODE	REF.
1202523007	ME 1/8" 22 3 PO PM NC P
1202523008	ME 1/8" 22 3 PO PM NO P

Valvole a puntale passa-parete servopilotate 3/2 NC-NO
3/2 NC-NO Sensible through-wall pushrod valves



Dati Tecnici

Pressione d'esercizio: 0÷10 Bar (0÷1,00 MPa)
Forza d'azionamento (a 6 Bar): 16 N
Peso: 0,085 Kg

Technical data

Working pressure: 0÷10 Bar (0÷1,00 MPa)
Thrust force (6 Bar): 16 N
Weight: 0,085 Kg

Codici di ordinazione Order codes

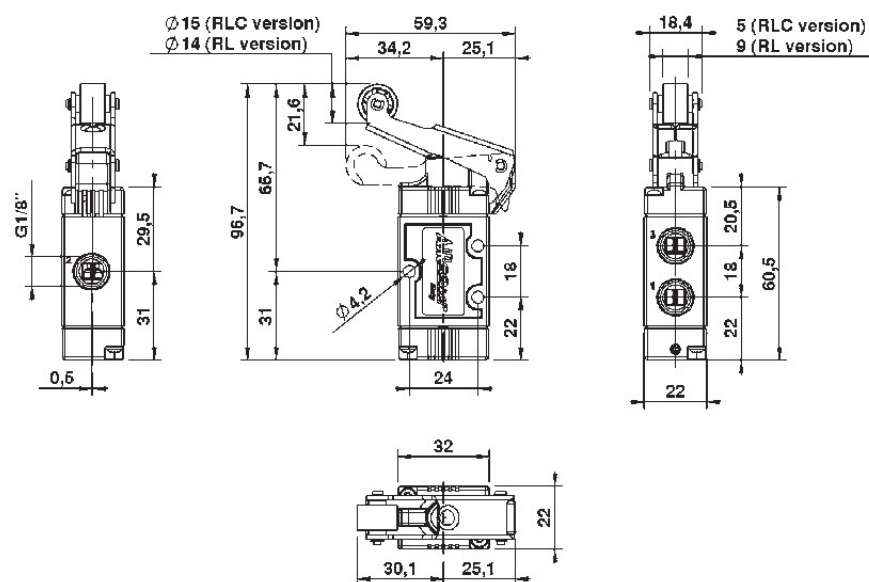
Versione con rullo in tecnopolimero.
Version with technopolymer roller.

CODE	REF.
1202423003	ME 1/8" 22 3 RL ML NC P
1202423004	ME 1/8" 22 3 RL ML NO P

Versione con cuscinetto a sfere.
Version with ball bearing.

CODE	REF.
1202423007	ME 1/8" 22 3 RLC ML NC P
1202423008	ME 1/8" 22 3 RLC ML NO P

Valvole con leva a rullo 3/2 NC-NO
3/2 NC-NO Roller lever valves



Valvole a comando meccanico Mechanically operated Valves

Dati Tecnici

Pressione d'esercizio: 0÷10 Bar (0÷1,00 MPa)
Forza d'azionamento (a 6 Bar): 16 N
Peso: 0,092 Kg

Technical data

Working pressure: 0÷10 Bar (0÷1,00 MPa)
Thrust force (6 Bar): 16 N
Weight: 0,092 Kg

Codici di ordinazione Order codes

Versione con rullo in tecnopolimero.
Version with technopolymer roller.

CODE **REF.**
1202423005 ME 1/8" 22 3 RU ML NC P

1202423006 ME 1/8" 22 3 RU ML NO P

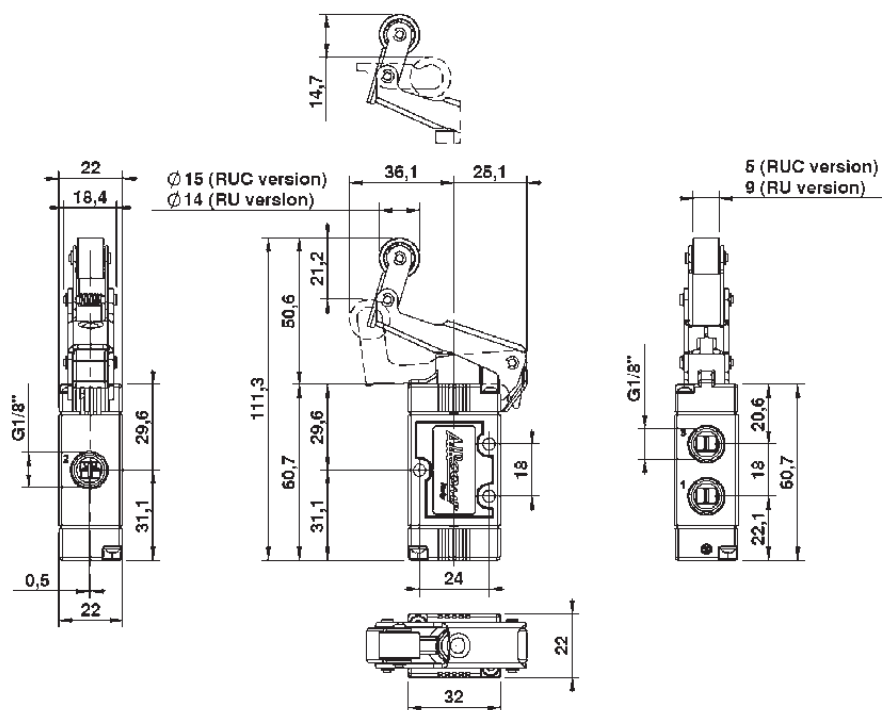
Versione con cuscinetto a sfere.
Version with ball bearing.

CODE **REF.**
1202423009 ME 1/8" 22 3 RUC ML NC P

1202423010 ME 1/8" 22 3 RUC ML NO P

(Per disegni aggiornati della versione "RUC" contattare U.T. Aircomp)
(For up-to-date "RUC" version drawing, contact Aircomp technical dept)

Valvole con leva a rullo unidirezionale 3/2 NC-NO
3/2 NC-NO Unidirectional roller lever valves



Dati Tecnici

Pressione d'esercizio: 1÷10 Bar (0,10÷1,00 MPa)
Forza d'azionamento (a 6 Bar): 4,5 N
Peso: 0,079 Kg

Technical data

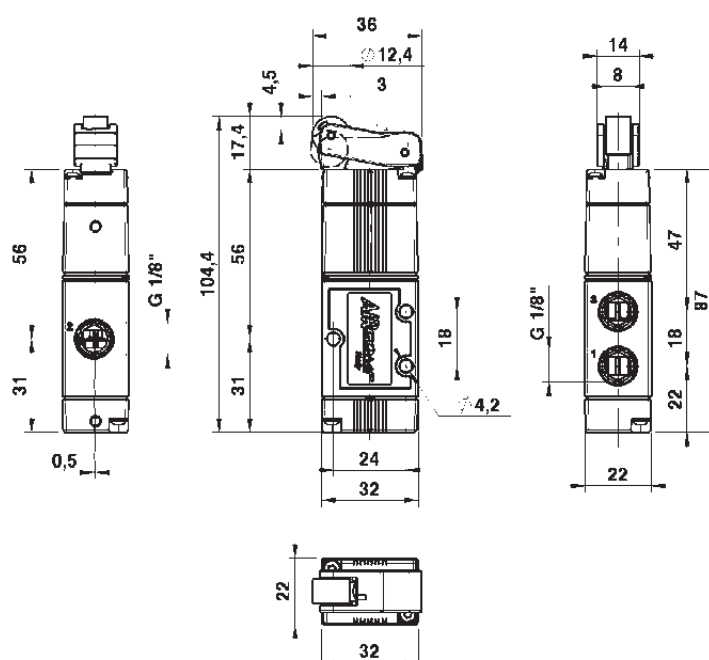
Working pressure: 1÷10 Bar (0,10÷1,00 MPa)
Thrust force (6 Bar): 4,5 N
Weight: 0,079 Kg

Codici di ordinazione Order codes

CODE **REF.**
1202523003 ME 1/8" 22 3 RS PM NC P

1202523004 ME 1/8" 22 3 RS PM NO P

Valvole con leva a rullo servopilotata 3/2 NC-NO
3/2 NC-NO Sensible roller lever valves



Valvole a comando meccanico Mechanically operated Valves

Dati Tecnici

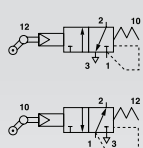
Pressione d'esercizio: 1÷10 Bar (0,10÷1,00 MPa)
Forza d'azionamento (a 6 Bar): 4,5 N
Peso: 0,082 Kg

Technical data

Working pressure: 1÷10 Bar (0,10÷1,00 MPa)
Thrust force (6 Bar): 4,5 N
Weight: 0,082 Kg

Codici di ordinazione

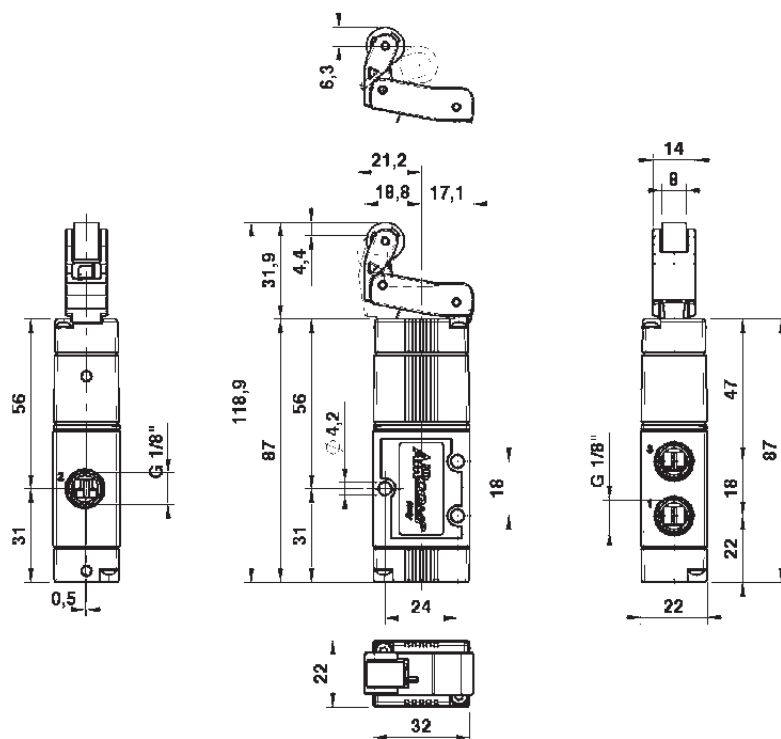
Order codes



CODE **REF.**
1202523005 ME 1/8" 22 3 RO PM NC P

1202523006 ME 1/8" 22 3 RO PM NO P

Valvole con leva a rullo unidirezionale servopilotata 3/2 NC-NO
3/2 NC-NO Sensible unidirectional roller lever valves



Dati Tecnici

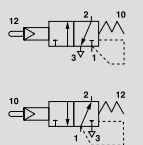
Pressione d'esercizio: 1÷10 Bar (0,10÷1,00 MPa)
Peso: 0,080 Kg

Technical data

Working pressure: 1÷10 Bar (0,10÷1,00 MPa)
Weight: 0,080 Kg

Codici di ordinazione

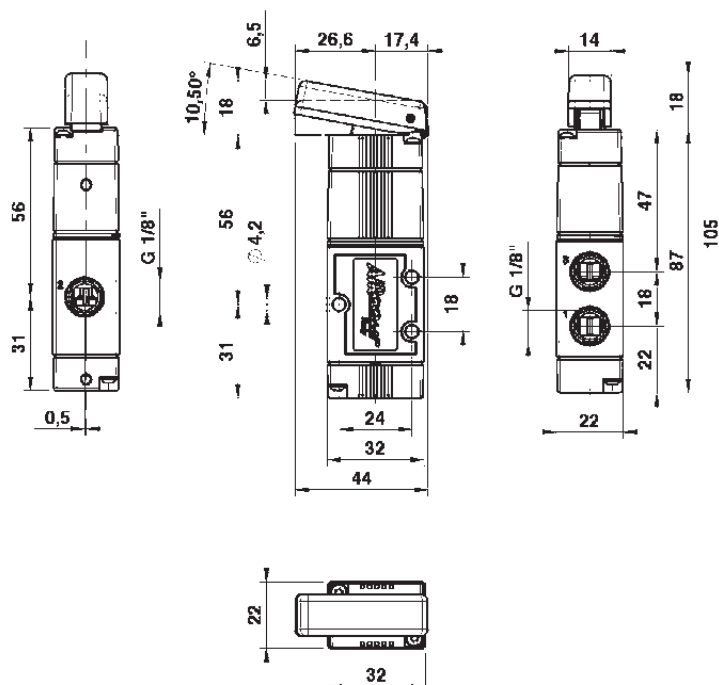
Order codes



CODE **REF.**
1202523011 ME 1/8" 22 3 LS PM NC P

1202523012 ME 1/8" 22 3 LS PM NO P

Valvola con leva a tasto servopilotata 3/2 NC-NO
3/2 NC-NO Sensible push lever valve



Valvole a comando meccanico Mechanically operated Valves

Dati Tecnici

Pressione d'esercizio: 1÷10 Bar (0,10÷1,00 MPa)

Peso: 0,078 Kg

NB: E' disponibile, a richiesta, la versione ad antenna munita di stelo filettato e dadi di fissaggio.

Technical data

Working pressure: 1÷10 Bar (0,10÷1,00 MPa)

Weight: 0,078 Kg

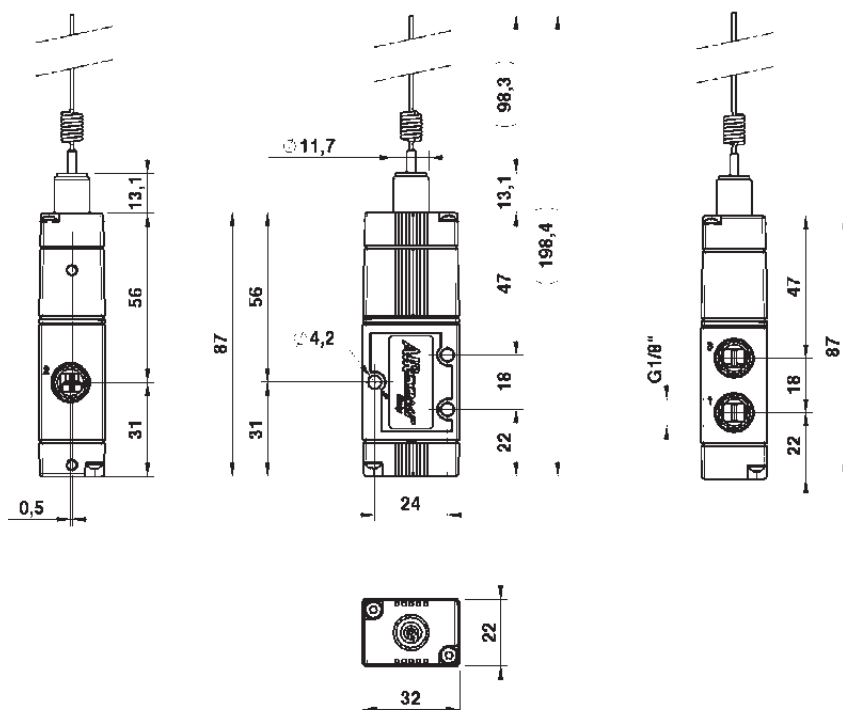
NB: On request is available whisker version provided with threaded rod and fixing nuts.

Codici di ordinazione

Order codes

	CODE	REF.
	1202523013	ME 1/8" 22 3 AN PM NC P
	1202523014	ME 1/8" 22 3 AN PM NO P

Valvole ad antenna 3/2 NC-NO 3/2 NC-NO Whisker valves



Dati Tecnici

Pressione d'esercizio: 1÷10 Bar (0,10÷1,00 MPa)

Peso: 0,078 Kg

Technical data

Working pressure: 1÷10 Bar (0,10÷1,00 MPa)

Weight: 0,078 Kg

Codici di ordinazione

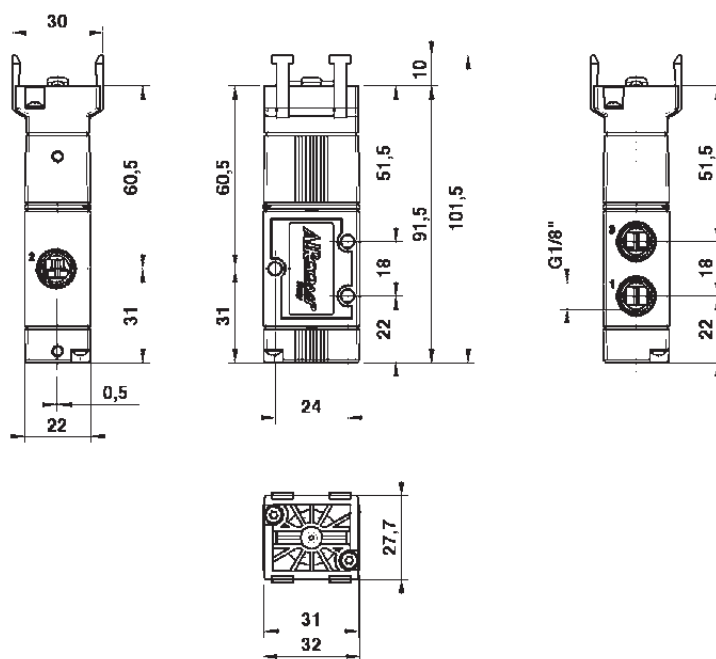
Order codes

	CODE	REF.
	1202523009	ME 1/8" 22 3 PB PM NC P
	1202523010	ME 1/8" 22 3 PB PM NO P

Configurazioni disponibili (*)

Available configurations (*)

Valvole 3/2 NC-NO predisposte per comandi a pannello 3/2 NC-NO Valves for panel mounting actuators



(*) Per la consultazione dei codici e delle caratteristiche degli attuatori vedi pag. 84.

(*) For actuators codes and features, refer to page 84.

120 ME 1/8"

Valvole a comando meccanico Mechanically operated Valves

Dati Tecnici

Pressione d'esercizio: 0÷10 Bar (0÷1,00 MPa)
Forza d'azionamento (a 6 Bar): 39 N
Peso: 0,067 Kg

Technical data

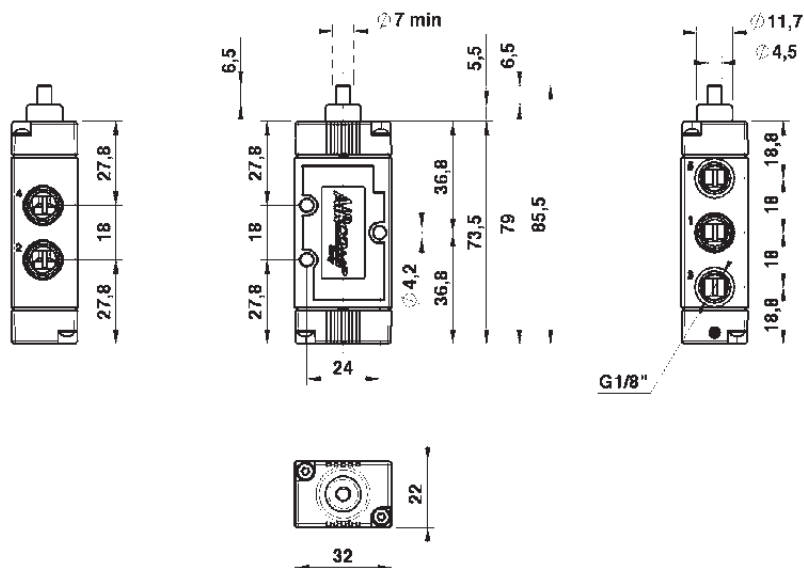
Working pressure: $0 \div 10$ Bar ($0 \div 1,00$ MPa)
Thrust force (6 Bar): 39 N
Weight: 0,067 Kg

Codici di ordinazione
Order codes



CODE	REF.
1202425001	ME 1/8" 22 5 PU ML OO P

Valvola a puntale 5/2
5/2 Pushrod valve



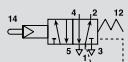
Dati Tecnici

Pressione d'esercizio: 1÷10 Bar (0,10÷1,00 MPa)
Forza d'azionamento (a 6 Bar): 9 N
Peso: 0,079 Kg

Technical data

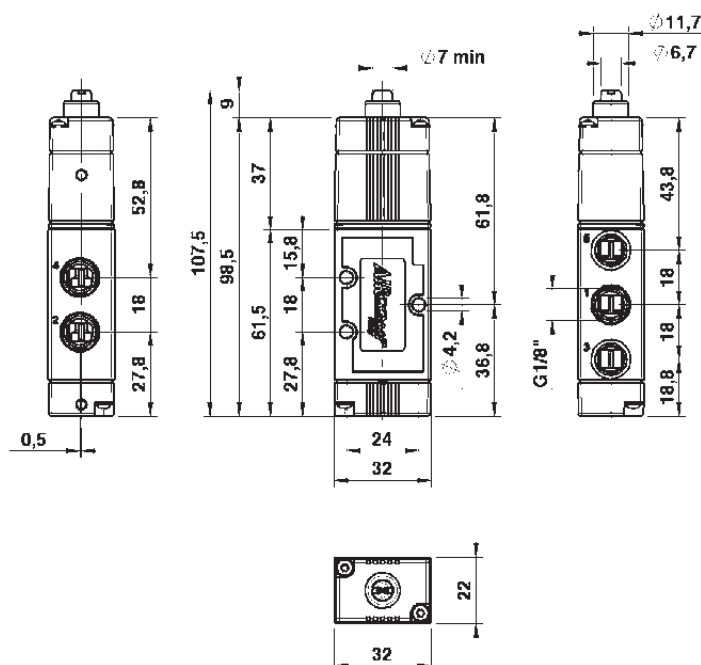
Working pressure: 1÷10 Bar (0,10÷1,00 MPa)
Thrust force (6 Bar): 9 N
Weight: 0,079 Kg

Codici di ordinazione
Order codes



CODE	REF.
1202525001	ME 1/8" 22 5 PS PM OO P

Valvola a puntale servopilotato 5/2
5/2 Sensible pushrod valve



Valvole a comando meccanico Mechanically operated Valves

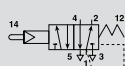
Dati Tecnici

Pressione d'esercizio: 1÷10 Bar (0,10÷1,00 MPa)
Forza d'azionamento (a 6 Bar): 9 N
Peso: 0,082 Kg

Technical data

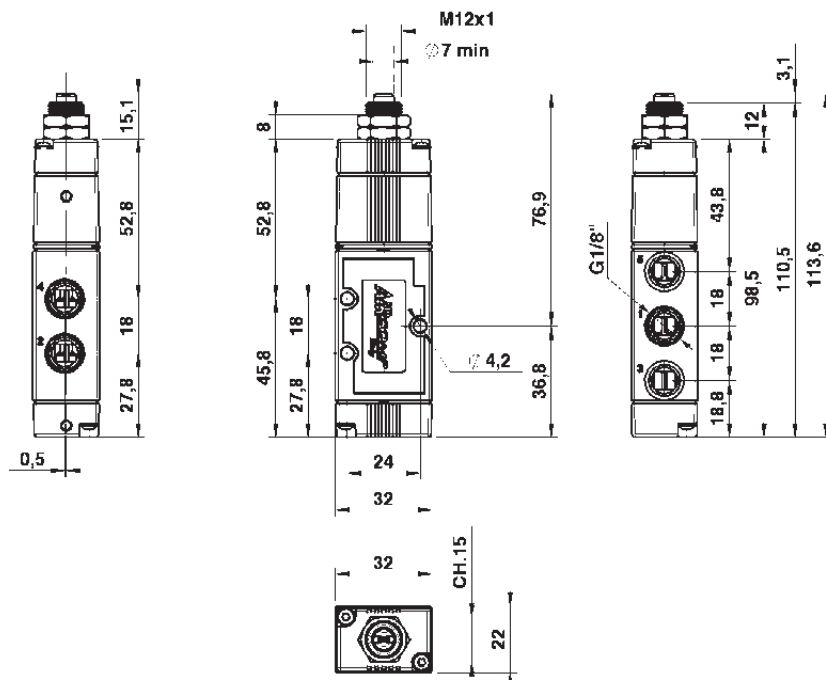
Working pressure: 1÷10 Bar (0,10÷1,00 MPa)
Thrust force (6 Bar): 9 N
Weight: 0,082 Kg

Codici di ordinazione Order codes



CODE 1202525004 **REF.** ME 1/8" 22 5 PO PM OO P

Valvola a puntale passa-parete servopilotato 5/2 5/2 Sensible through-wall pushrod valve



Dati Tecnici

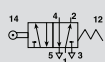
Pressione d'esercizio: 0÷10 Bar (0÷1,00 MPa)
Forza d'azionamento (a 6 Bar): 16 N
Peso: 0,092 Kg

Technical data

Working pressure: 0÷10 Bar (0÷1,00 MPa)
Thrust force (6 Bar): 16 N
Weight: 0,092 Kg

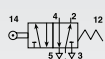
Codici di ordinazione Order codes

Versione con rullo in tecnopolimero.
Version with technopolymer roller.



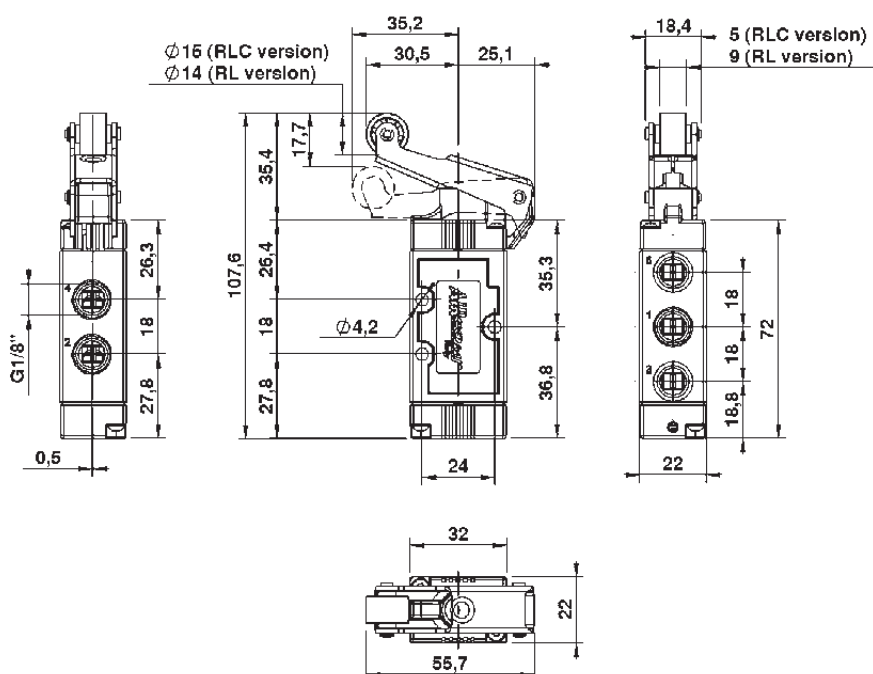
CODE 1202425002 **REF.** ME 1/8" 22 5 RL ML OO P

Versione con cuscinetto a sfere.
Version with ball bearing.



CODE 1202425006 **REF.** ME 1/8" 22 5 RLC ML OO P

Valvola con leva a rullo 5/2 5/2 Roller lever valve



(Per disegni aggiornati della versione "RLC" contattare U.T. Aircomp)
(For up-to-date "RLC" version drawing, contact Aircomp technical dept)

Valvole a comando meccanico Mechanically operated Valves

Dati Tecnici

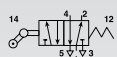
Pressione d'esercizio: 0÷10 Bar (0÷1,00 MPa)
Forza d'azionamento (a 6 Bar): 16 N
Peso: 0,098 Kg

Technical data

Working pressure: 0÷10 Bar (0÷1,00 MPa)
Thrust force (6 Bar): 16 N
Weight: 0,098 Kg

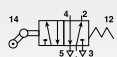
Codici di ordinazione Order codes

Versione con rullo in tecnopolimero.
Version with technopolymer roller.



CODE 1202425003 **REF.** ME 1/8" 22 5 RU ML OO P

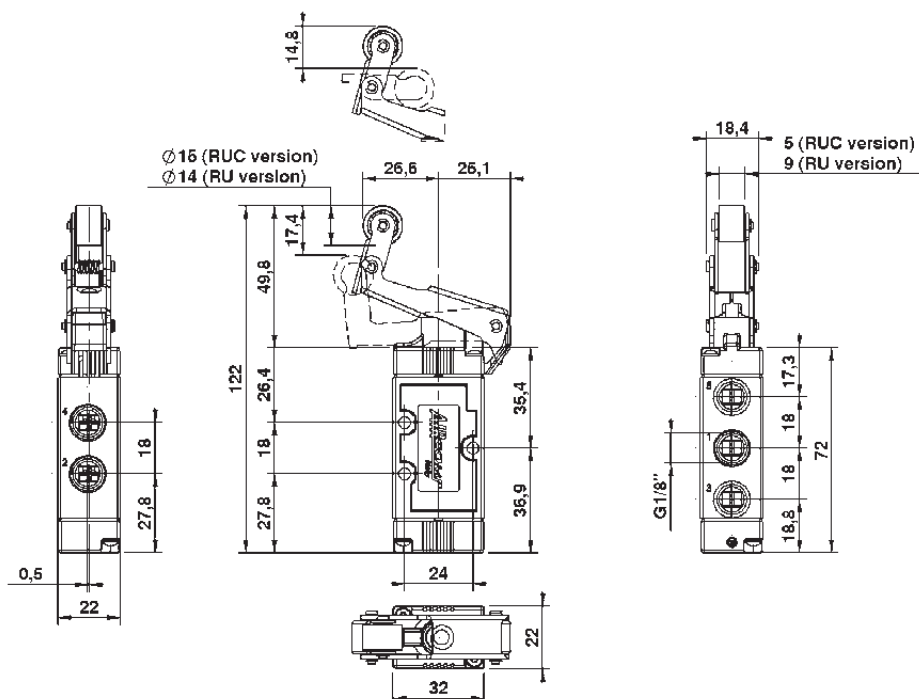
Versione con cuscinetto a sfere.
Version with ball bearing.



CODE 1202425007 **REF.** ME 1/8" 22 5 RUC ML OO P

(Per disegni aggiornati della versione "RUC" contattare U.T. Aircomp)
(For up-to-date "RUC" version drawing, contact Aircomp technical dept)

Valvola con leva a rullo unidirezionale 5/2
5/2 Unidirectional roller lever valve



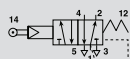
Dati Tecnici

Pressione d'esercizio: 1÷10 Bar (0,10÷1,00 MPa)
Forza d'azionamento (a 6 Bar): 4,5 N
Peso: 0,086 Kg

Technical data

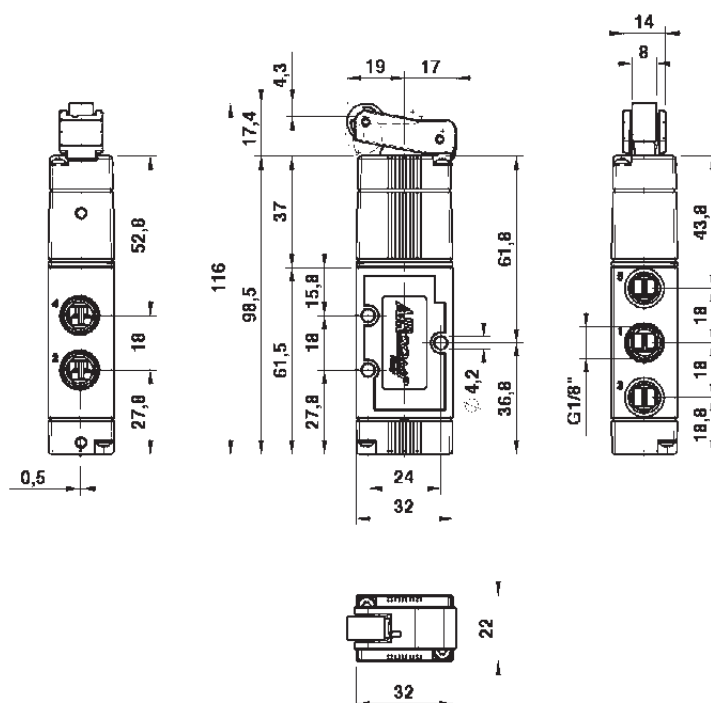
Working pressure: 1÷10 Bar (0,10÷1,00 MPa)
Thrust force (6 Bar): 4,5 N
Weight: 0,086 Kg

Codici di ordinazione Order codes



CODE 1202525002 **REF.** ME 1/8" 22 5 RS PM OO P

Valvola con leva a rullo servopilotata 5/2
5/2 Sensible roller lever valve



120 ME 1/8"

Valvole a comando meccanico Mechanically operated Valves

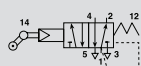
Dati Tecnici

Pressione d'esercizio: 1÷10 Bar (0,10÷1,00 MPa)
Forza d'azionamento (a 6 Bar): 4,5 N
Peso: 0,089 Kg

Technical data

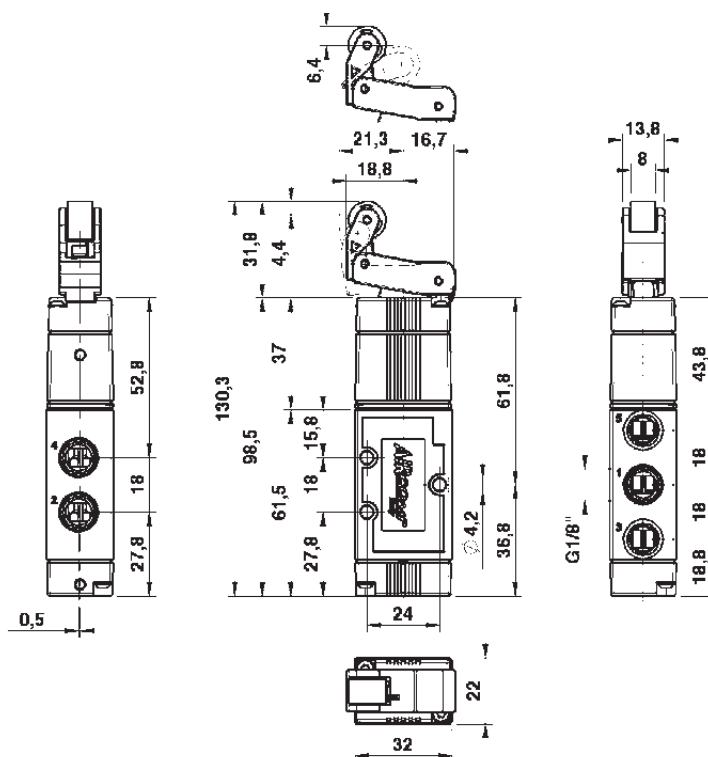
Working pressure: 1÷10 Bar (0,10÷1,00 MPa)
Thrust force (6 Bar): 4,5 N
Weight: 0,089 Kg

Codici di ordinazione
Order codes



CODE	REF.
1202525003	ME 1/8" 22 5 BO PM OO P

Valvola con leva a rullo unidirezionale servopilotata 5/2
5/2 Sensible unidirectional roller lever valve



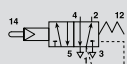
Dati Tecnici

Pressione d'esercizio: 1÷10 Bar (0,10÷1,00 MPa)
Peso: 0,087 Kg

Technical data

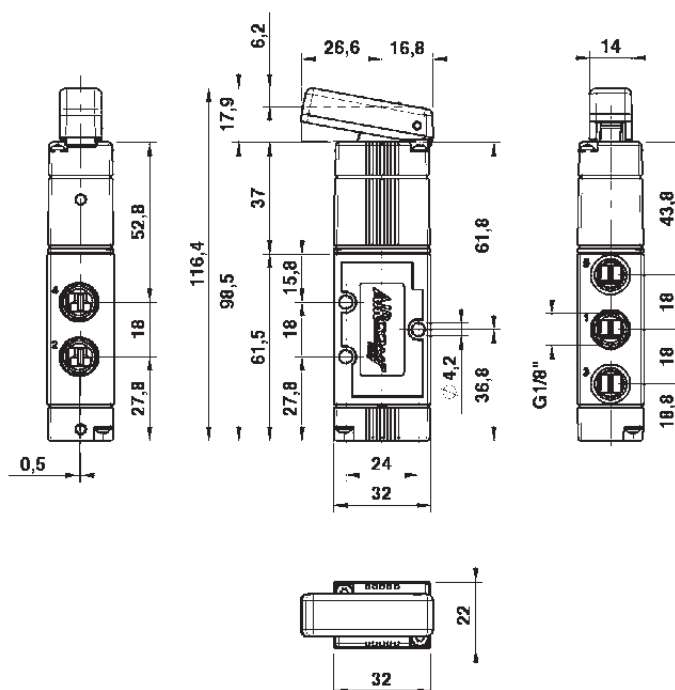
Working pressure: 1÷10 Bar (0,10÷1,00 MPa)
Weight: 0,087 Kg

Codici di ordinazione
Order codes



CODE	REF.
1202525006	ME 1/8" 22 5 LS PM OO P

Valvola con leva a tasto servopilotata 5/2
5/2 Sensible push lever valve



Valvole a comando meccanico Mechanically operated Valves

Dati Tecnici

Pressione d'esercizio: 1÷10 Bar (0,10÷1,00 MPa)

Peso: 0,085 Kg

NB: E' disponibile, a richiesta, la versione ad antenna munita di stelo filettato e dadi di fissaggio.

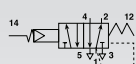
Technical data

Working pressure: 1÷10 Bar (0,10÷1,00 MPa)

Weight: 0,085 Kg

NB: On request is available whisker version provided with threaded rod and fixing nuts.

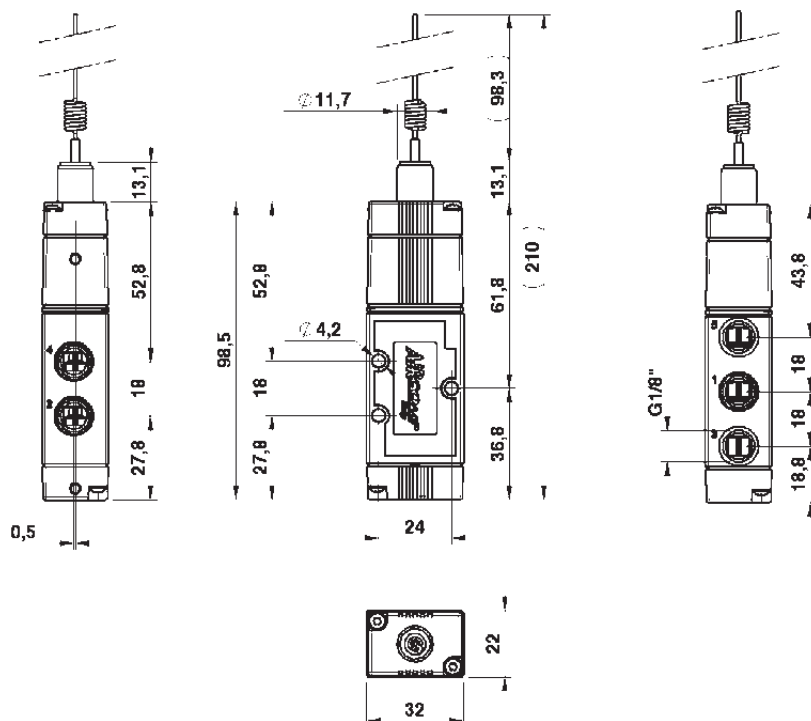
Codici di ordinazione Order codes



CODE
1202525007

REF.
ME 1/8" 22 5 AN PM OO P

Valvola ad antenna 5/2 5/2 Whisker valve



Dati Tecnici

Pressione d'esercizio: 1÷10 Bar (0,10÷1,00 MPa)

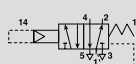
Peso: 0,085 Kg

Technical data

Working pressure: 1÷10 Bar (0,10÷1,00 MPa)

Weight: 0,085 Kg

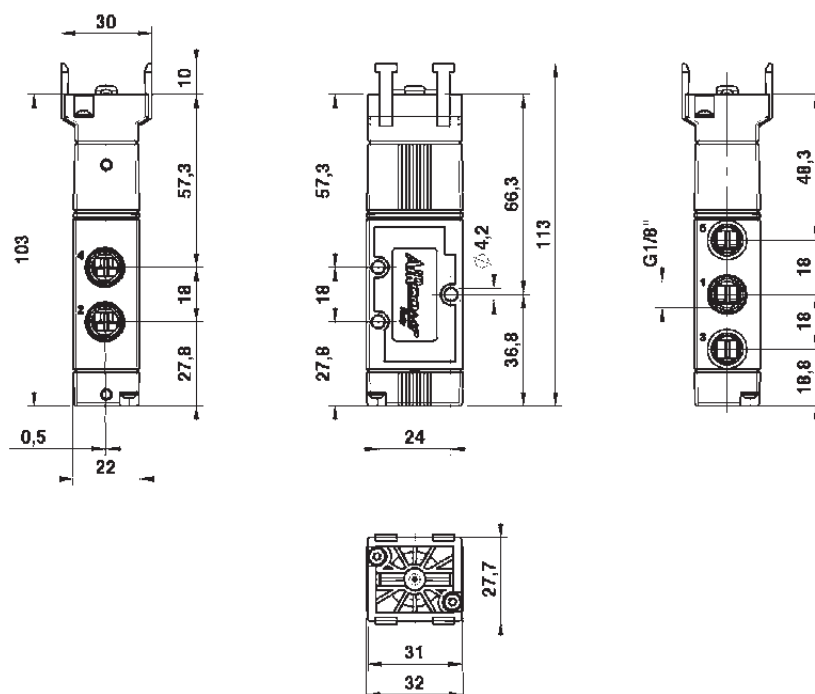
Codici di ordinazione Order codes



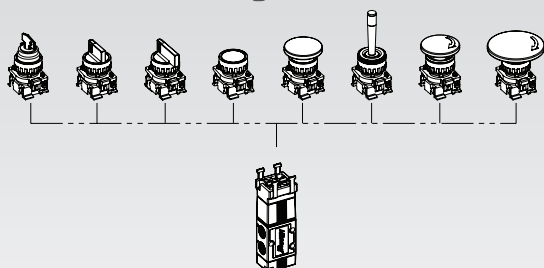
CODE
1202525005

REF.
ME 1/8" 22 5 PB PM OO P

Valvola 5/2 predisposta per comandi a pannello 5/2 Valve for panel mounting actuators



Configurazioni disponibili (*) Available configurations (*)



(*) Per la consultazione dei codici e delle caratteristiche degli attuatori vedi pag. 84.

(*) For actuators codes and features, refer to page 84.