

Speed Controller(AS)



SAS Series



How to Order

SAS

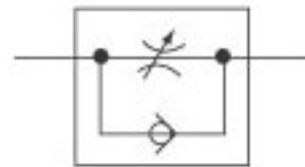
2 000- 02

1 Speed Controller

2 Body Size
2 - 1/8, 1/4
4 - 1/2

3 Port Size
01 - Rc(PT)1/8"
02 - Rc(PT)1/4"
03 - Rc(PT)3/8"
04 - Rc(PT)1/2"

Symbol



Specification

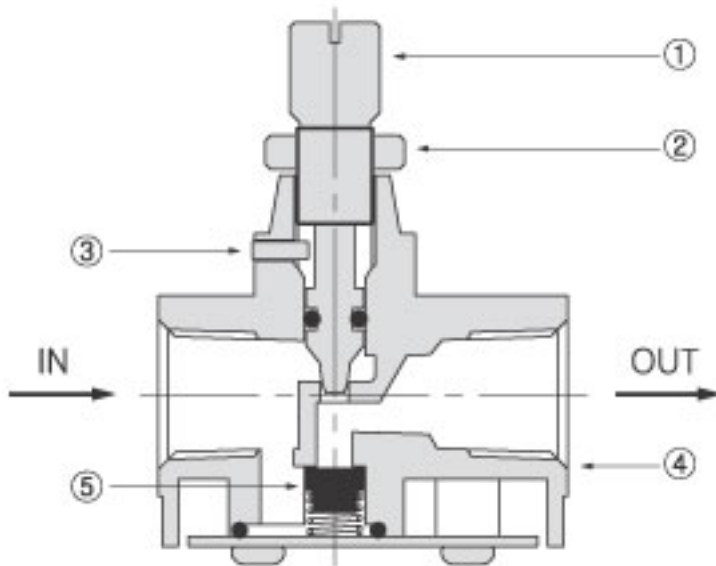
Fluid	Compressed air	
Max. supply pressure	1.5MPa[15.3kgf/cm ²]	
Max. operating pressure	0~0.97MPa [0~9.9 kgf/cm ²]	
Ambient temperature	5 ~ 60°C	
Number of needle rotation	8 turn (10 turn)	
Weight(g)	SAS 4000-02	235
	SAS 4000-03	214
	SAS 4000-04	204

SAS Series



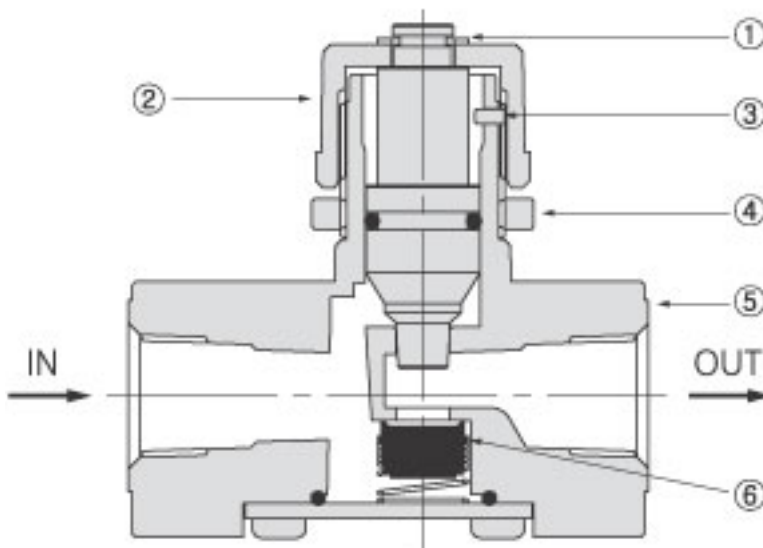
Structure / Parts

SAS 2000



No.	PARTS	MATERIAL
1	Handle	Bs
2	Handle nut	Bs
3	Stopper pin	Bs
4	Body	ZnDC
5	Check valve	NBR

SAS 4000



No.	PARTS	MATERIAL
1	E-ring	
2	Handle	ZnDC
3	Stopper pin	Bs
4	Handle nut	ZnDC
5	Body	ALDC
6	Check valve	NBR

SAS Series

Dimensions

SAS 2000

Model	A	B	C	D	E	F	G
SAS 2000-01	40	51	15	21.5	16	30	PT 1/8
SAS 2000-02	40	53	17	25	20	30	PT 1/4

SAS 4000

