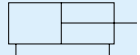


Mini Cylinder

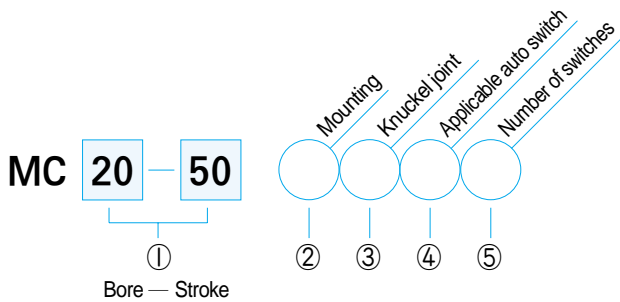
(Series MC)

Bore size ϕ 20, ϕ 40

KS Symbol



How to order



① Bore size — Standard stroke (mm)

Bore size	Standard stroke
ϕ 20	25, 50, 75, 100, 125, 150, 200, 250, 300
ϕ 25	25, 50, 75, 100, 125, 150, 200, 250, 300
ϕ 32	25, 50, 75, 100, 125, 150, 200, 250, 300
ϕ 40	25, 50, 75, 100, 125, 150, 200, 250, 300

② Mounting

Mounting	Basic type
Blank	Basic type
L	Axial foot type
F	Rod side flange type
C	Single clevis type
D	Double clevis type
T	Trunion type
E	Built in single clevis type

③ Knuckle joint

Knuckle joint	Basic type
Y	Double knuckle joint
I	Single knuckle joint

④ Applicable auto switch

Applicable auto switch	Basic type
Blank	None
A30B	A - 30 switch with band
A35B	A - 35 switch with band

⑤ Number of switches

Number of switches	Basic type
1	1 pc
2	2 pcs
n	n pcs



- Built-in magnet (standard)
- Stainless steel tube provides long cycle life
- No lubrication required
- Compact and lightweight

Specifications

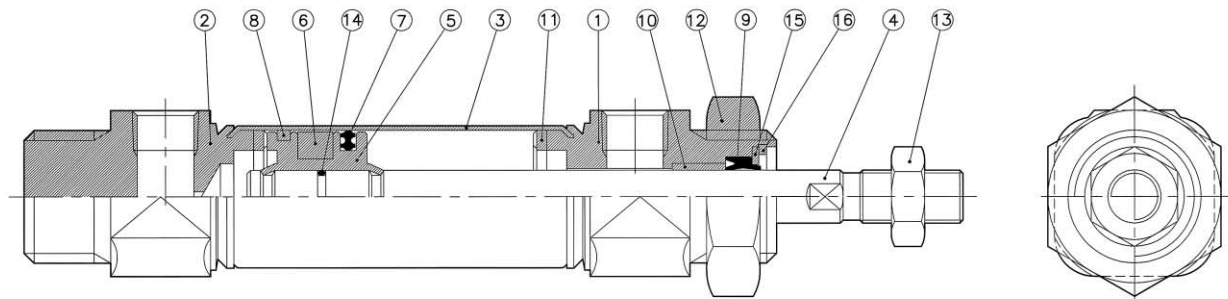
Acting	Double acting single rod		
Fluid	Air		
Proof pressure	15 kgf/cm ² (1500kPa)		
Max. operating pressure	9.9 kgf/cm ² (990kPa)		
Min. operating pressure	0.5 kgf/cm ² (50kPa)		
Ambient and fluid temperature	-10℃ ~+70℃		
Cushion	Rubber cushion (Standard)		
Lube	None (Non-lube)		
Piston speed	50~750 mm/s		
Thread tolerance	KS 2class		
Stroke tolerance	+1.0 0		
Allowable kinetic energy	ϕ 20	2.7 kgf · cm	
	ϕ 25	4 kgf · cm	
	ϕ 32	6.5 kgf · cm	
	ϕ 40	12 kgf · cm	

Weight table

(kgf)

Bore size (mm)		ϕ 20	ϕ 25	ϕ 32	ϕ 40
Basic weight		0.16	0.23	0.28	0.56
Additional weight for each 50 of stroke		0.04	0.06	0.08	0.13
Mounting bracket additional weight	Foot type	0.14	0.16	0.16	0.27
	Flange type	0.07	0.08	0.08	0.12
	Single clevis type	0.05	0.06	0.06	0.09
	Double clevis type	0.05	0.06	0.06	0.13
	Trunion type	0.04	0.07	0.07	0.10
Built in single clevis type		-0.02	-0.02	-0.01	-0.04

Construction



Parts List

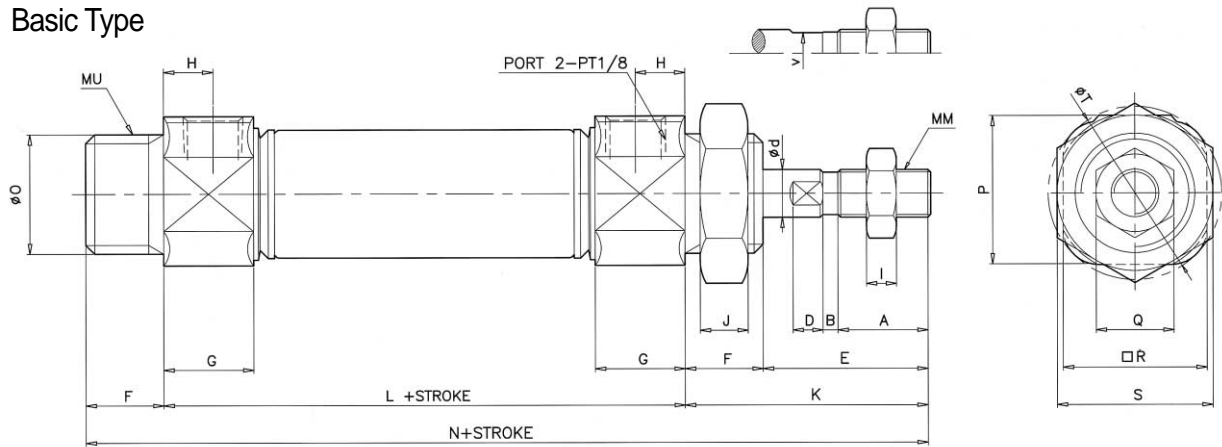
NO.	Description	Material
①	Rod Cover	A ℓ
②	Head Cover	A ℓ
③	Cylinder Tube	SUS
④	Piston Rod	SM 45C
⑤	Piston	A ℓ
⑥	Magnet	-
⑦	Piston Packing	NBR
⑧	Wear Ring	-
⑨	Rod Packing	NBR
⑩	Oilless Bearing	-
⑪	Damper	Urethan
⑫	Mounting Nut	MBsBE
⑬	Hexagon Nut	-
⑭	O ring	NBR
⑮	Plane Washer	-
⑯	Snap Ring	SK-5

Accessories List

Mounting		Basic type	Foot type	Flange type	Single clevis type	Double clevis type	Trunion type	Built in single clevis type
Standard	Mounting nut	○	○	○	-	-	-	-
	Rod end nut	○	○	○	○	○	○	○
	Pin for clevis	-	-	-	-	○	-	-
	Nut for trunion	-	-	-	-	-	○	-
Option	Foot	-	○	-	-	-	-	-
	Flange	-	-	○	-	-	-	-
	Single clevis	-	-	-	○	-	-	-
	Double clevis	-	-	-	-	○	-	-
	Trunion	-	-	-	-	-	○	-
	Single knuckle joint	○	○	○	○	○	○	○
	Double knuckle joint	○	○	○	○	○	○	○
Auto switch	○	○	○	○	○	○	○	

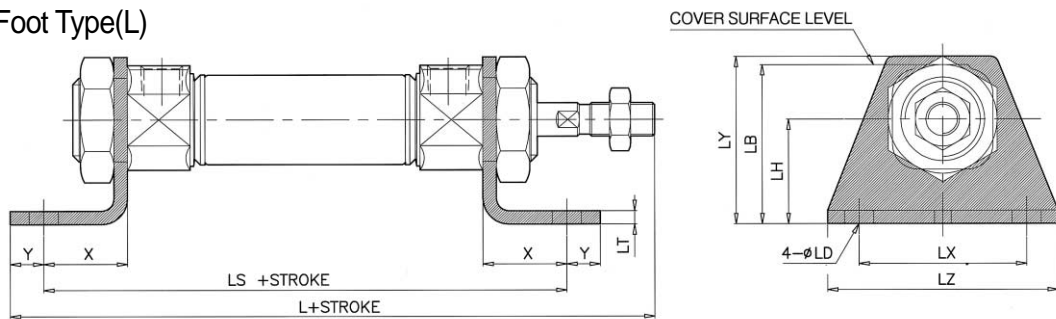
Mini Cylinder $\phi 20 \sim \phi 40$

Basic Type



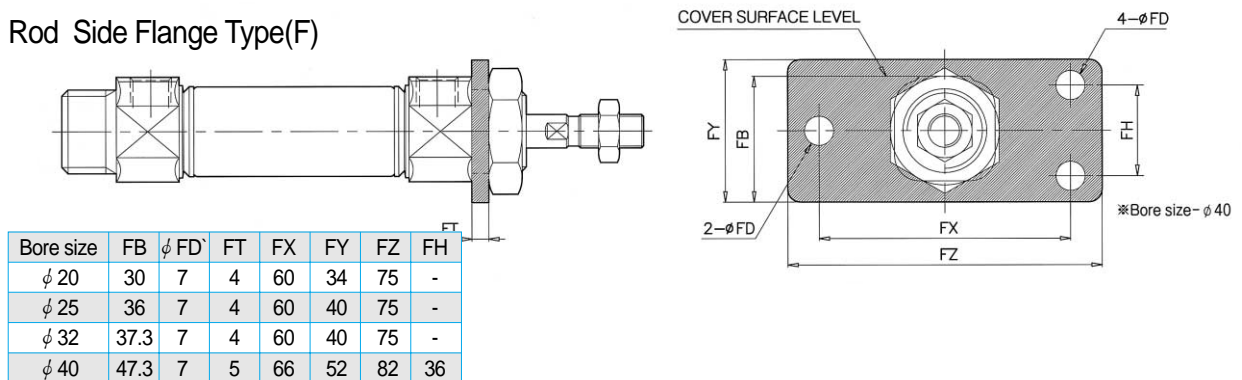
Bore size	A	B	D	E	F	G	H	I	J	K	L	N	$\phi O_{(H8)}$	P	Q	MM	MU	$\square R$	S	ϕT	V	ϕd
$\phi 20$	15.5	2.5	5	28	13	15	8	5	8	41	62	116	$20^{0_{-0.033}}$	25	13	M8×1.25	M20×1.5	24	26	29	7	8
$\phi 25$	19.5	2.5	5.5	32	13	15	8	6	8	45	62	120	$26^{0_{-0.033}}$	31	17	M10×1.25	M26×1.5	30	32	36	8	10
$\phi 32$	19.5	2.5	5.5	32	13	15	8	6	8	45	64	122	$26^{0_{-0.033}}$	35.5	17	M10×1.25	M26×1.5	34.5	32	40.5	10	12
$\phi 40$	21	3	7	34	16	21.5	11	8	10	50	88	154	$32^{0_{-0.039}}$	42.5	22	M14×1.5	M32×2	42.5	41	46.5	12	14

Axial Foot Type(L)



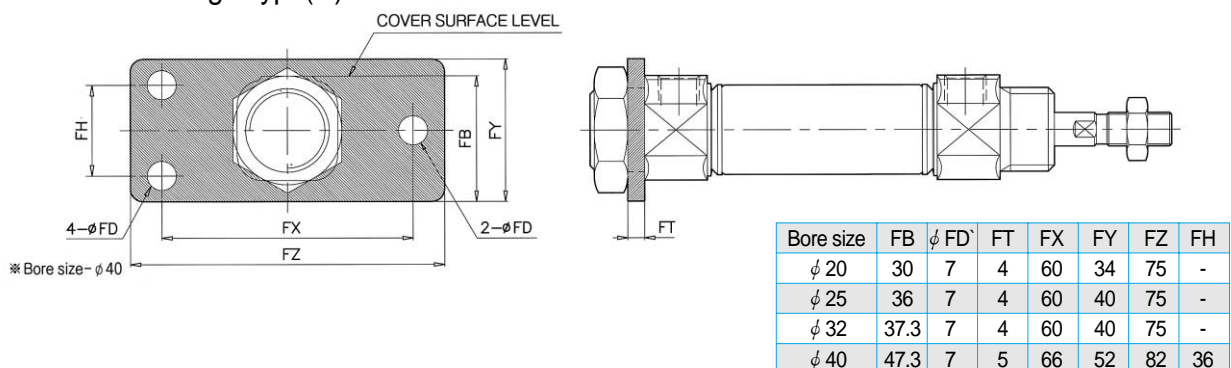
Bore size	L	LS	LB	ϕLD	LH	LT	LX	LY	LZ	X	Y
$\phi 20$	131	102	38	6.8	25	3.2	40	40	55	20	8
$\phi 25$	135	102	44	6.8	28	3.2	40	47	55	20	8
$\phi 32$	137	104	45.3	6.8	28	3.2	40	47	55	20	8
$\phi 40$	171	134	51.3	7	30	3.2	55	54	75	23	10

Rod Side Flange Type(F)



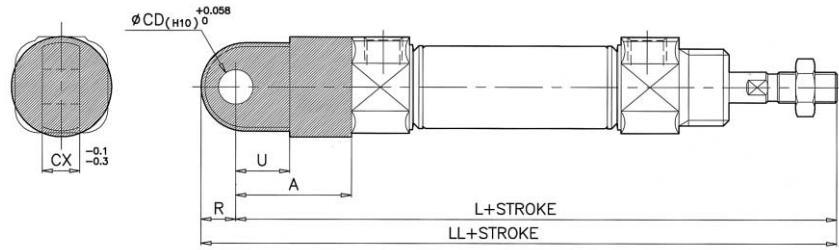
Bore size	FB	ϕFD	FT	FX	FY	FZ	FH
$\phi 20$	30	7	4	60	34	75	-
$\phi 25$	36	7	4	60	40	75	-
$\phi 32$	37.3	7	4	60	40	75	-
$\phi 40$	47.3	7	5	66	52	82	36

Head Side Flange Type(G)



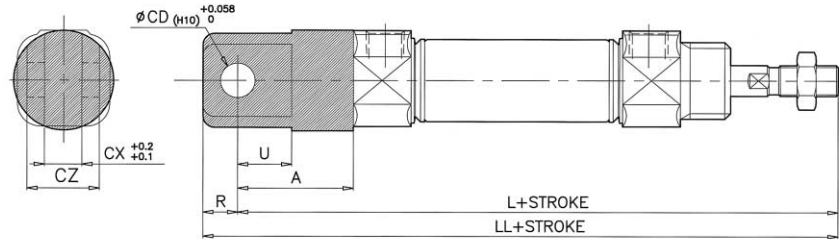
Bore size	FB	ϕFD	FT	FX	FY	FZ	FH
$\phi 20$	30	7	4	60	34	75	-
$\phi 25$	36	7	4	60	40	75	-
$\phi 32$	37.3	7	4	60	40	75	-
$\phi 40$	47.3	7	5	66	52	82	36

Single Clevis Type (C)



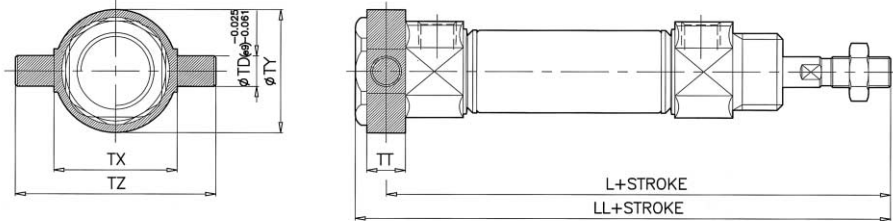
Bore size	L	LL	A	U	R	ϕ CD	CX
$\phi 20$	133	142	30	14	9	9	10
$\phi 25$	137	146	30	14	9	9	10
$\phi 32$	139	148	30	14	9	9	10
$\phi 40$	177	188	39	18	11	10	15

Double Clevis Type (D)



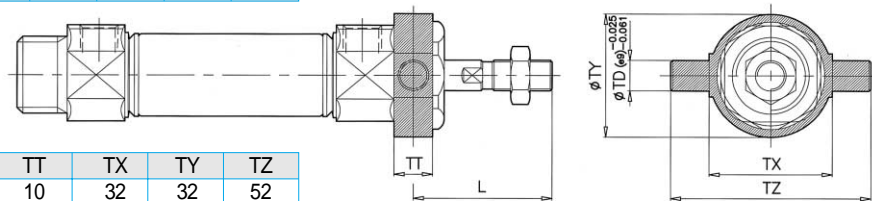
Bore size	L	LL	A	U	R	ϕ CD	CX	CZ
$\phi 20$	133	142	30	14	9	9	10	19
$\phi 25$	137	146	30	14	9	9	10	19
$\phi 32$	139	148	30	14	9	9	10	19
$\phi 40$	177	188	39	18	11	10	15	30

Head Side
Trunion Type (U)



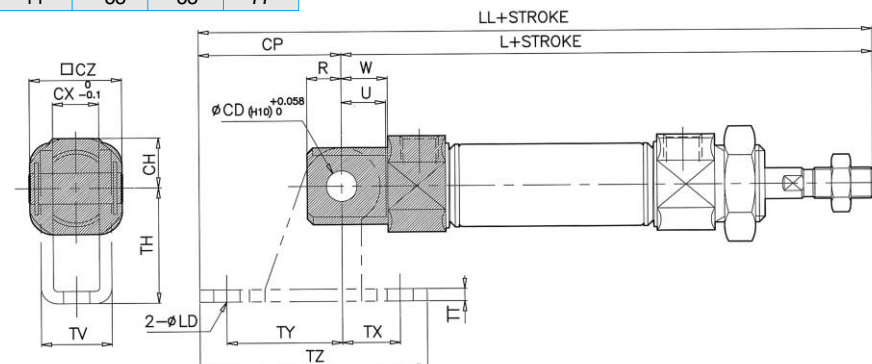
Bore size	L	LL	ϕ TD	TT	TX	TY	TZ
$\phi 20$	108	118	8	10	32	32	52
$\phi 25$	112	122	9	10	40	40	60
$\phi 32$	114	124	9	10	40	40	60
$\phi 40$	143.5	154	10	11	53	53	77

Rod Side
Trunion Type (T)



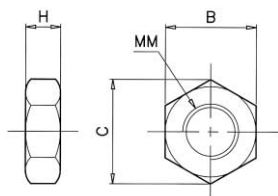
Bore size	L	ϕ TD	TT	TX	TY	TZ
$\phi 20$	36	8	10	32	32	52
$\phi 25$	40	9	10	40	40	60
$\phi 32$	40	9	10	40	40	60
$\phi 40$	44.5	10	11	53	53	77

Built in
Single Clevis Type (E)



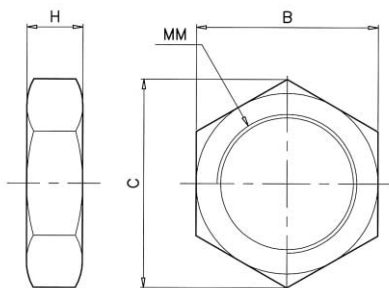
Bore size	L	R	U	W	ϕ CD	CH	CX	\square CZ	LL	ϕ LD	TH	CP	TV	TX	TY	TZ	TT
$\phi 20$	115	9	11.5	12	8	13	12	24	152	6.8	30	37	18.4	15	30	59	3.2
$\phi 25$	119	9	11.5	12	8	16	12	30	156	6.8	30	37	18.4	15	30	59	3.2
$\phi 32$	124	12	14.5	15	10	18.3	20	34.5	174	9	40	50	28	15	40	75	4
$\phi 40$	153	12	14.5	15	10	21.3	20	42.5	203	9	40	50	28	15	40	75	4

Rod End Nut



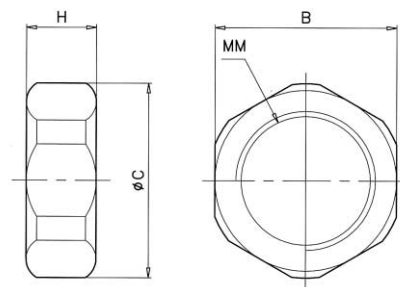
Bore size	B	C	H	MM
$\phi 20$	13	15	5	M8×1.25
$\phi 25, \phi 32$	17	19.5	6	M10×1.25
$\phi 40$	22	25.4	8	M14×1.5

Mounting Nut



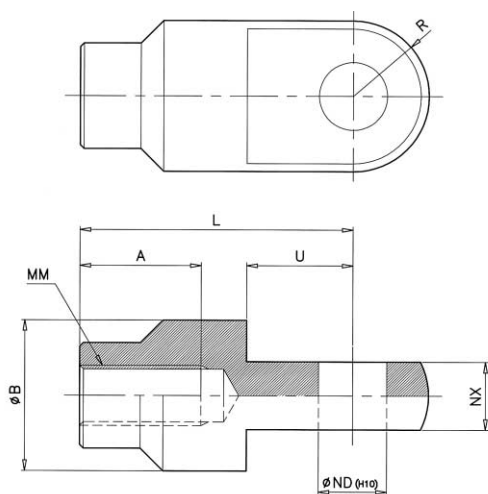
Bore size	B	C	H	MM
$\phi 20$	26	30	8	M20×1.5
$\phi 25, \phi 32$	32	37	8	M26×1.5
$\phi 40$	41	47.3	10	M32×2

Trunion Nut



Bore size	B	C	H	MM
$\phi 20$	26	28	10	M20×1.5
$\phi 25, \phi 32$	32	34	10	M26×1.5
$\phi 40$	41	45	10	M32×2

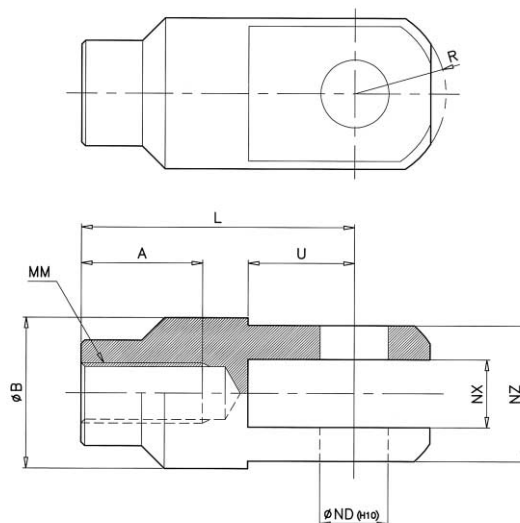
Single Knuckle Joint



Bore size	A	ϕB	L	MM	$\phi ND_{(H10)}$	NX	R	U
$\phi 20$	16	20	36	M8×1.25	$9^{+0.058}_0$	$9^{-0.1}_{-0.2}$	10	14
$\phi 25, \phi 32$	18	20	38	M10×1.25	$9^{+0.058}_0$	$9^{-0.1}_{-0.2}$	10	14

※ $\phi 40$ is equipped as a standard

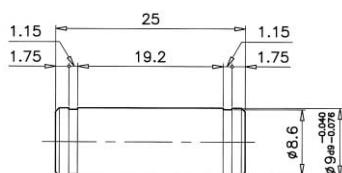
Double Knuckle Joint



Bore size	A	ϕB	L	MM	$\phi ND_{(H10)}$	NX	NZ	R	U
$\phi 20$	16	20	36	M8×1.25	$9^{+0.058}_0$	$9^{+0.2}_{+0.1}$	18	10	14
$\phi 25, \phi 32$	18	20	38	M10×1.25	$9^{+0.058}_0$	$9^{+0.2}_{+0.1}$	18	10	14

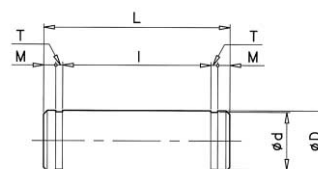
※ $\phi 40$ is equipped as a standard

Pin for Clevis & Knuckle



※ $\phi 40$ is equipped as a standard

Clevis Pin



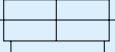
Bore size	$\phi D_{(d9)}$	ϕd	L	I	M	T	Clip
$\phi 20, \phi 25$	$8^{+0.040}_{-0.076}$	7.6	24.5	19.5	1.6	0.9	C type 8
$\phi 32, \phi 40$	$10^{+0.040}_{-0.076}$	9.6	34	29	1.35	1.15	C type 10

Double Rod

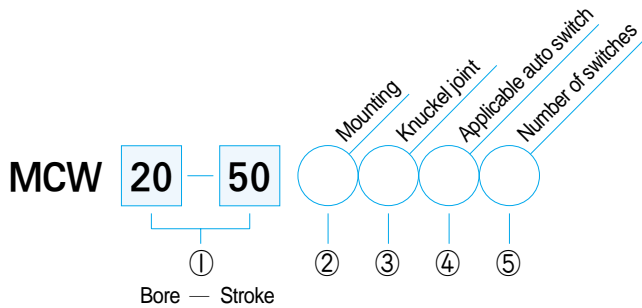
Mini Cylinder

(Series MCW)

Bore size $\phi 20 \sim \phi 40$

KS Symbol 

How to order



① Bore size — Standard stroke (mm)

$\phi 20$	25, 50, 75, 100, 125, 150, 200, 250, 300
$\phi 25$	25, 50, 75, 100, 125, 150, 200, 250, 300,
$\phi 32$	25, 50, 75, 100, 125, 150, 200, 250, 300,
$\phi 40$	25, 50, 75, 100, 125, 150, 200, 250, 300,

- Built-in magnet (standard)
- Stainless steel tube provides long cycle life
- No lubrication required
- Compact and lightweight

② Mounting

Blank	Basic type
L	Axial foot type
F	Rod side flange type
T	Trunion type

④ Applicable auto switch

Blank	None
A30B	A - 30 switch with band
A35B	A - 35 switch with band

③ Knuckle joint

Y	Double knuckle joint
I	Single knuckle joint

⑤ Number of switches

1	1 pc
2	2 pcs
n	n pcs

