

## Workshop Compressors CLASSIC Series

Displacement: 210 to 460 l/min – Pressure: 10 bar



### What do you expect from your Classic workshop compressor?

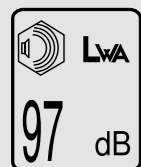
Quality results can be achieved only by using quality tools and equipment. A dependable source of compressed air delivered by a high-performance compressor is therefore essential for many applications. KAESER "CLASSIC" series compressors are designed and built to the strictest quality standards, yet are priced to meet the needs of small and up-and-coming businesses without compromising efficiency, reliability or durability.

### KAESER CLASSIC workshop compressors

KAESER's range of "CLASSIC" compressors ensures that a model is available to suit every need. Carefully constructed using the very best materials, each unit ensures a long, efficient and reliable service life. Proven quality, robust design and long maintenance intervals (fluid change required every two years) make "CLASSIC" series compressors from KAESER the ideal choice for everyday use.

### Symbols of quality and cutting-edge technology

Made in Germany – KAESER Classic compressors provide exceptional quality and performance. The LwA and CE symbols guarantee that all compressors conform to legal requirements. All CLASSIC compressors are type approved.



**High**  
quality cylinder



**Made in Germany!**

# CLASSIC Workshop Compressors



### CLASSIC compressors – Unrivalled quality and value

Standardised components and a focus on well-established models ensure that KAESER's "Classic" compressors provide outstanding quality, value and performance.

Every "Classic" model is equipped with an exclusive KAESER compressor block to guarantee optimum reliability and long service life.

In fact the whole compressor package is engineered for maximum durability – every "Classic" compressor is manufactured, assembled and tested in the KAESER reciprocating compressor production centre in Coburg, Germany.



### KAESER compressor block

The compressor block forms the heart of the unit and is manufactured at KAESER's main production facility in Coburg, Germany. All KAESER "CLASSIC" compressor products feature durable pistons, piston rings, conrods, bearings and crank flanges to ensure long service life and optimal performance.



### Stainless steel valves

The valve reeds in the corrosion resistant stainless steel valves are fitted with heat dissipating lift limiters to ensure air-tight valve closure and extended service life.



### High-grade lubricating fluid

Every KAESER workshop compressor is filled with special high-grade lubricating fluid that virtually eliminates build up of oil-carbon deposits on the valves. In addition, the fluid enables the lubrication change interval to be doubled to approximately 1000 operating hours (or 2 years).



### Precision machining

Using the most advanced manufacturing processes and with more than 80 years of experience in precision engineering, KAESER's skill and expertise guarantees products of the very highest quality.



### Meticulous assembly

The care that is taken in the production of a compressor block is also taken at every stage of compressor assembly.

# CLASSIC – Workshop Compressors

CLASSIC mini 210/10 W to CLASSIC 460/90 D

High  
quality cylinder



CLASSIC 320/90 W  
CLASSIC 320/90 D  
CLASSIC 460/90 W  
CLASSIC 460/90 D



KAESER  
COMPRESSORS

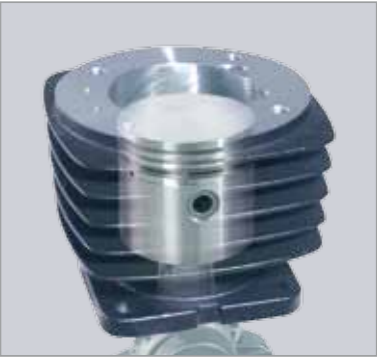
Before delivery, each compressor is subjected to rigorous testing and inspection in accordance with Kaeser's strict Quality Management System (top left).

The precision-machined finish on the inside wall of the cylinder ensures that no significant wear takes place after the unit is started for the first time (top right).

KAESER "CLASSIC" compressors are highly versatile: For example, they provide the perfect solution for all renovation, construction and car repair applications (below).



Rigorous testing in accordance with Kaeser's QM System



High quality cylinder ensures long service life



Impact wrenching for fast wheel changes



Outstanding painting results every time

## Technical Specifications – CLASSIC Series

Model	Displacement l/min	Filling volume <sup>1)</sup> l/min	Receiver volume l	Max. pressure bar	Motor power kW	No. of cylinders	Sound pressure level <sup>2)</sup> dB(A)	Dimensions D x W x H mm	Weight kg
Classic mini 210/10 W	210	140	10	10	1.5	1	73	420 x 370 x 650	29
Classic 210/25 W Classic 210/50 W	210	140	25 50	10	1.5	1	76	610 x 310 x 670 820 x 400 x 750	31 39
Classic 270/25 W Classic 270/50 W	270	175	25 50	10	1.5	1	77	610 x 310 x 670 820 x 400 x 750	34 39
Classic 320/25 W Classic 320/25 D	320	205	25	10	1.5	1	78	610 x 310 x 700 610 x 310 x 690	34 40
Classic 320/50 W Classic 320/50 D	320	205	50	10	1.5	1	78	820 x 400 x 770 810 x 400 x 770	41 43
Classic 320/90 W Classic 320/90 D	320	205	90	10	1.5	1	78	1080 x 440 x 850	62 53
Classic 460/50 W Classic 460/50 D	460	320	50	10	2.2	1	75	820 x 410 x 860 820 x 400 x 850	64 59
Classic 460/90 W Classic 460/90 D	460	320	90	10	2.2	1	75	1170 x 440 x 920 1170 x 440 x 910	70 68

<sup>1)</sup> Corresponds to a receiver filling period of 3 to 6 bar at operating temperature; <sup>2)</sup> Sound pressure level as per ISO 2151 and basic norm ISO 9614-2, tolerance : ± 3 dB(A)

## Suitable Tools and Accessories

Eco Set Paint spray gun, spray gun, tyre inflator, blow gun and hose	Impact wrench	Chipping hammer
●	○	–
●	○	–
●	○	–
●	●	○
●	●	○
●	●	○
●	●	●
●	●	●

● Best suited, ○ Suited to short-term use, – Not applicable

# CLASSIC – Quality at a glance

The exceptional quality of KAESER's products is achieved by using the very best materials and components. The components in every Classic Workshop compressor are


manufactured to Kaeser's stringent quality standards to ensure unrivalled reliability and performance. The key compressor components are highlighted below.




- |   |  |
|---|--|
| ① Silenced air intake filter                            | ⑦ Safety valve (not visible)                               |
| ② Compressor block                                      | ⑧ Air receiver, powder-coated, internal protective coating |
| ③ Maintenance-free 1:1 direct drive                     | ⑨ Sound & vibration damper                                 |
| ④ Fan cover   | ⑩ Oil filler with vent                                     |
| ⑤ Pressure switch                                       | ⑪ Oil drain plug   |
| ⑥ Filter pressure regulator with quick-release coupling |  |

## Tools and Accessories

### Paint spray guns

	<b>Optima 601</b> 100l/min	Container capacity 0.6l Nozzle set 1.2 mm
	<b>LM 2000/B</b> 220l/min	Container capacity 0.5l Nozzle set 1.6 mm


### Complete set of accessories

	<b>Eco Set</b>	With paint spray gun Optima 601, oil spray gun and blow gun, tyre inflation set, bike-tyre and ball inflation set, 5m PVC hose
---	----------------	--


### Blow guns, nozzles and extensions

	<b>Blow gun</b> 160l/min	With male coupling and 1mm nozzle
	<b>Flat jet nozzle</b>	Plastic, 16 parallel air channels
	<b>Flat jet nozzle</b>	With jet-width adjuster
	<b>Full jet nozzle</b>	Brass, concentrated air jet
	<b>Full jet nozzle</b>	For blowing larger areas
	<b>Bicycle tyre adapter</b>	For inflating bicycle tyres
	<b>Extensions</b>	100 mm, 150 mm, 240 mm

### Compressed air hose

	<b>PVC</b>	Fabric reinforced, with hose coupling and nozzle
	DN 6x3mm, 5m, 16 bar	DN 6x3mm, 10m, 16 bar
	DN 6x3mm, 20m, 16 bar	DN 6x3mm, 25m, 16 bar
	DN 9x3mm, 10m, 10 bar	DN 13x3.5mm, 10m, 10 bar


### Hose bracket

	150 mm wide	Aluminium
---	-------------	-----------


### Spray guns

	<b>Oil spray gun</b> 65l/min	1 l aluminium container, straight spout, air connection via male coupling
---	---------------------------------	---


### Car wash gun

	125l/min	Water connector G 1/2 Water consumption 1.25m <sup>3</sup> /h (at 6 bar)
---	----------	---

### Cartridge gun

	0.8l/stroke	For standard cartridges 215 x 50mm Air connection via male coupling
---	-------------	--


### Sandblasting guns

	180l/min	With 0.6 l container For 0.2- 0.4mm blasting abrasive
--	----------	--

### Tyre inflator with pressure gauge

	150 mm wide	Range 0 - 10 bar, 6mm male hose connector
---	-------------	--

### Bicycle-tyre and ball inflation set

	3-piece set	With bicycle tyre adapter, ball adapter, inflating nozzle for air beds and rubber dinghies
---	-------------	--

# KAESER – The world is our home

As one of the world's largest manufacturers of rotary screw compressors, KAESER KOMPRESSOREN is represented throughout the world by a comprehensive network of branches, subsidiary companies and authorised partners in over 90 countries.

With innovative products and services, KAESER KOMPRESSOREN's experienced consultants and engineers help customers to enhance their competitive edge by working in close partnership to develop progressive system concepts that continuously push the boundaries of performance and compressed air efficiency. Moreover, the decades of knowledge and expertise from this industry-leading system provider are made available to each and every customer via the Kaeser group's global computer network.

These advantages, coupled with KAESER's worldwide service organisation, ensure that all products operate at the peak of their performance at all times and provide maximum availability.

